

Township of Uxbridge

Open House

for the New Baseball Diamonds at the Fields of Uxbridge

November 4, 2020



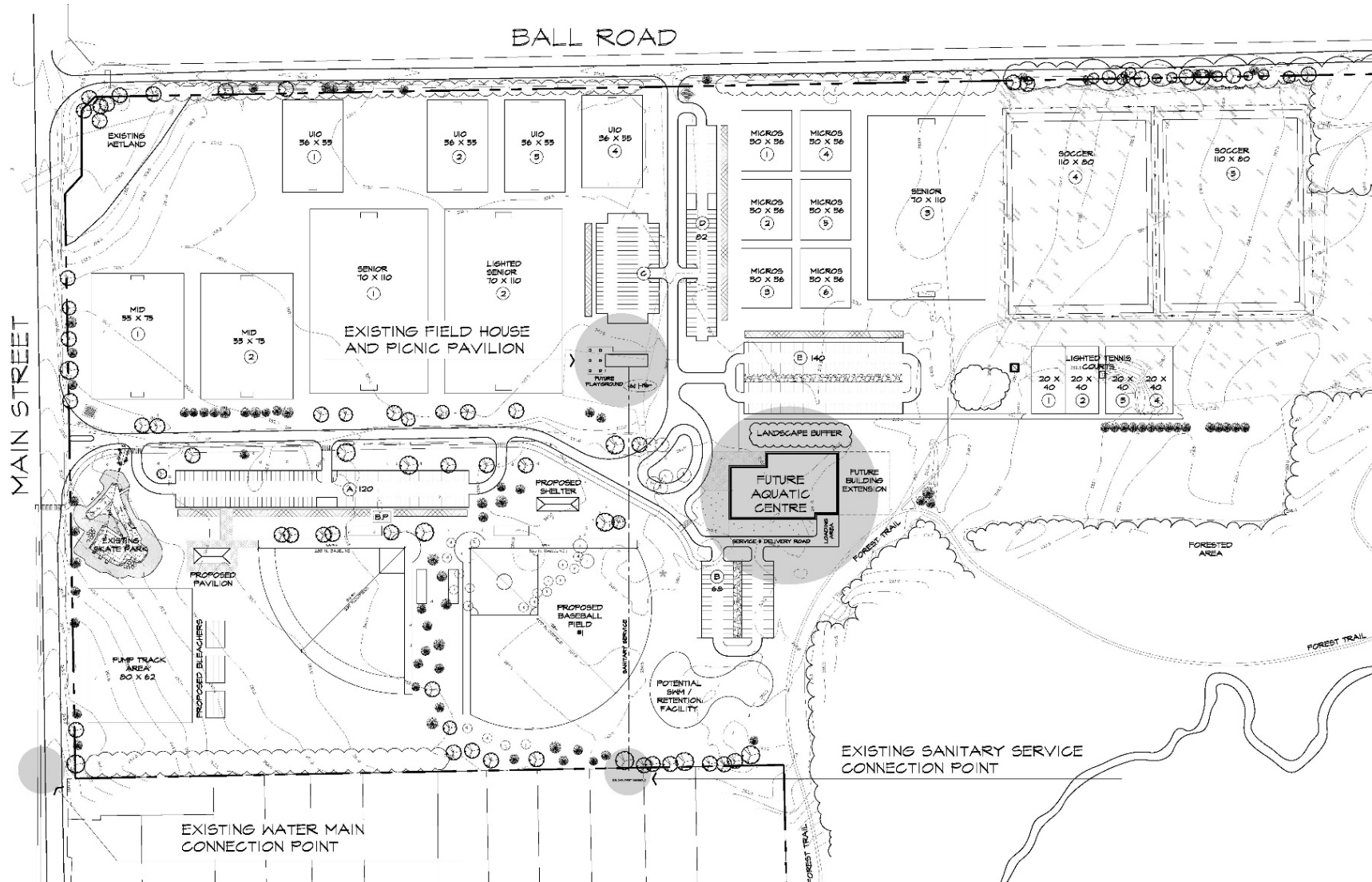
Welcome!

AGENDA:

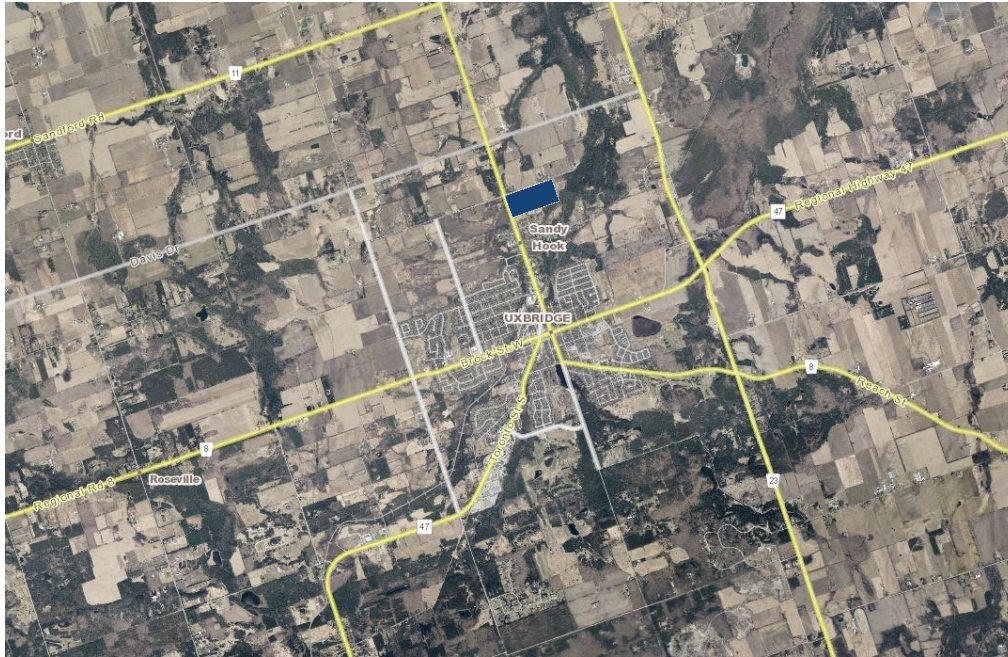
- Master Plan & Consultations to Date
- Park Location & Site Context
- Existing Conditions
- Conceptual Plan
- Diamond Orientation
- Hardball Diamond
- Softball Diamond
- Parking Lot
- Storm Water Management & Plantings
- Q&A



Fields of Uxbridge Master Plan



Fields of Uxbridge Park Location & Context Maps



- The Park is located on the Eastern side of the Township of Uxbridge
- Abutting the intersection of Main St. N. and Ball Rd.
- Access to the park is through Main St. N.
- Adjacent to Residents on Colby Rd.



Fields of Uxbridge Existing Conditions



Existing Site includes :

- Soccer Fields
- Field House
- Skatepark
- Pump Park
- Granular Parking Lot (18 Spaces)
- Asphalt Parking Lot (out of service)
- Internal Roads
- Mature Trees
- Trails
- Wetland

Fields of Uxbridge Conceptual Plan



Project Program Highlights:

-
- Softball Diamond
-
- Parking Lot (120 Spaces)
-
- Site Furnishings
-
- Berm / Buffer Zones
-
- Hardball Diamond
-
- Connecting Walkways
-
- Tree Plantings
-
- LID Features / Infiltration Basins

Diamond Orientation – Why did it change?



- Sports Orientation (Sun/Safety)
- Grading / Drainage
- Accessibility

Fields of Uxbridge Hardball Diamond



- Lighting
- Irrigation
- Regulation Size (120m / 396')
- 30m Buffer from Residences

- Marco-Clay In-Field
- Chain Link Fence
- Covered Players Bench
- Bleachers (5 Tier)

- Portable Pitching Mound
- Bull Pen

Fields of Uxbridge Softball Diamond



- Lighting
- Irrigation
- Regulation Size (100.58m / 330')
- 40m Buffer from Residences
- Marco-Clay In-Field
- Chain Link Fence
- Covered Players Bench
- Bleachers (5 Tier)

Fields of Uxbridge Parking Lot & Pedestrian Connections



Parking Stalls:
- 6.0m length x 3.0m width
- 8.0m Driving Aisles

Total Parking Stalls: 120
Total Accessible Parking Stalls: 6
3m Wide Walkways

Storm Water Management and Plantings



- **New Tree / Buffer Plantings**
- **Naturalized Swale Plantings**
- **LID Features / Infiltration Basins**

Thank you for attending the

Open House

for the New Baseball Diamonds at the Fields of Uxbridge

November 3, 2020

Questions?



Conceptual Plan



