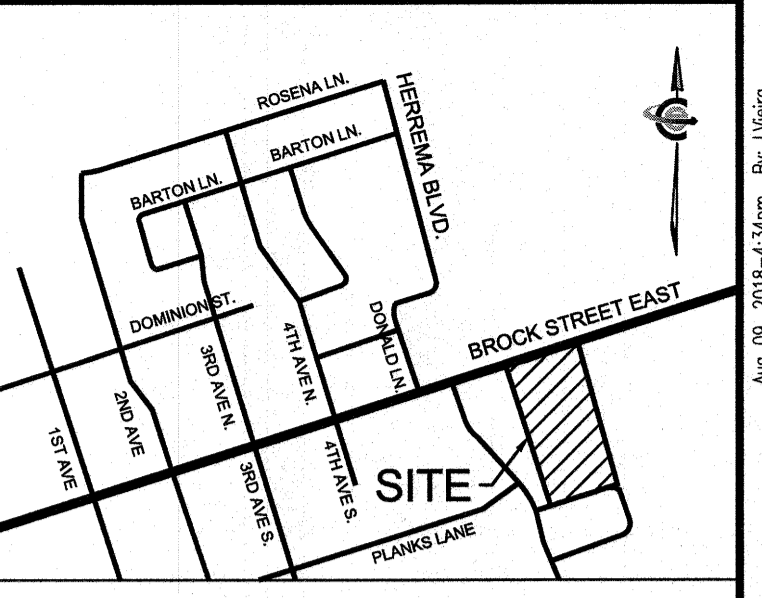
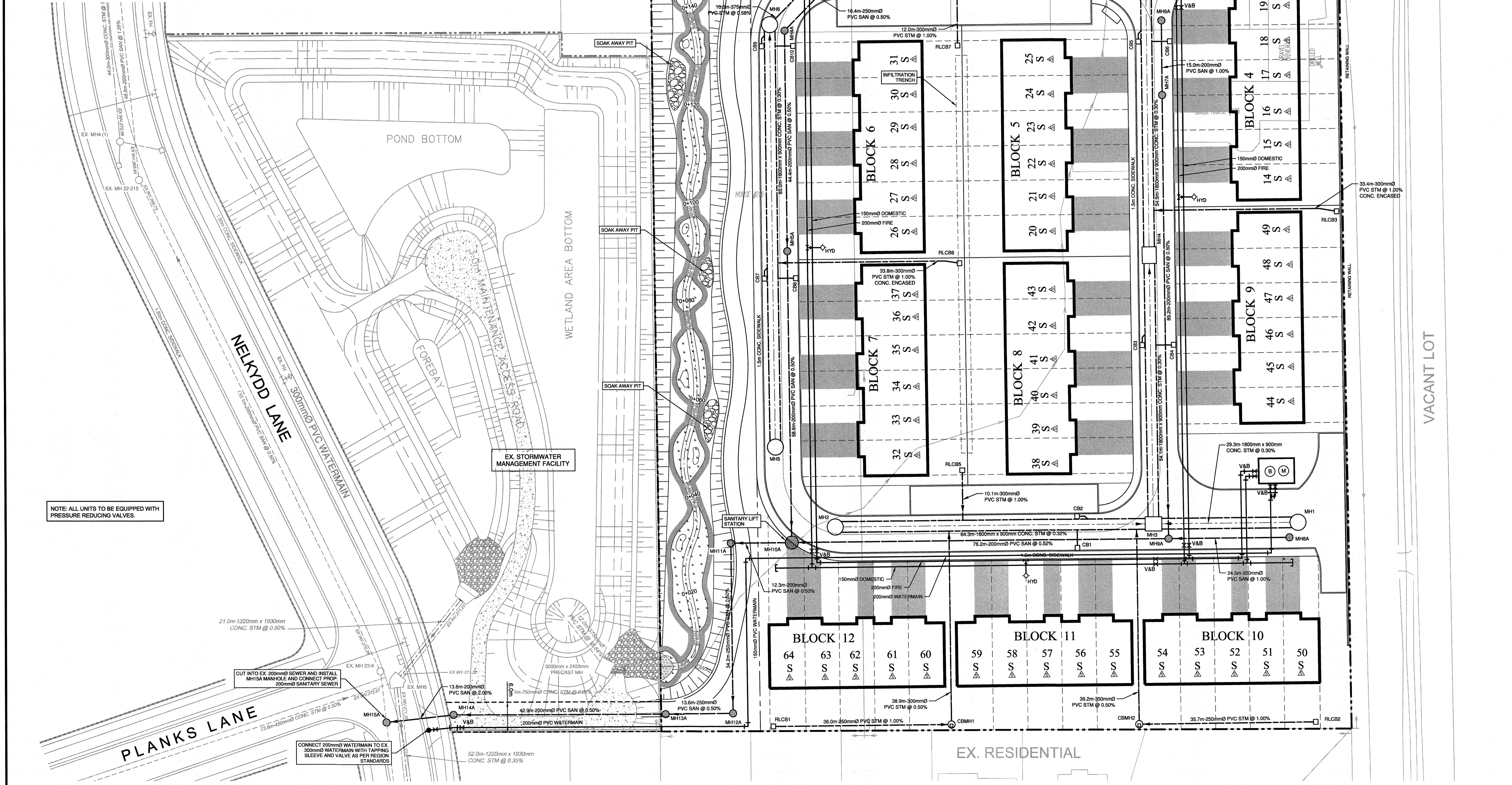


SANITARY SEWER STRUCTURE INVENTORY					
MH #	MH DIAMETER	MH OPSD	FRAME OPSD	TOP ELEV.	INVERTS
MH1A	1200mm	701.010	401.010	271.64	W 288.73 (200mm)
MH2A	1200mm	701.010	401.010	271.37	E 288.40 (200mm) W 288.08 (200mm)
MH3A	1200mm	701.010	401.010	271.72	SW 287.94 (250mm) S 288.37 (200mm)
MH4A	1200mm	701.010	401.010	271.90	NE 288.02 (250mm) S 287.88 (200mm)
MH5A	1200mm	701.010	401.010	272.21	N 287.86 (200mm) S 287.65 (200mm)
MH6A	1200mm	701.010	401.010	271.51	S 288.50 (200mm)
MH7A	1200mm	701.010	401.010	271.81	N 288.35 (200mm) S 288.32 (200mm)
MH8A	1200mm	701.010	401.010	272.58	W 288.52 (200mm)
MH9A	1200mm	701.010	401.010	272.31	N 287.87 (200mm) E 288.28 (200mm) W 287.78 (200mm)
MH10A	2400mm	701.013	Standard	273.07	N 287.34 (200mm) E 287.38 (200mm) W 271.58 (200mm)
MH11A	1200mm	701.010	Standard	273.01	E 271.50 (200mm) W 271.42 (200mm)
MH12A	1200mm	701.010	401.010	272.80	N 271.25 (200mm) W 271.18 (200mm)
MH13A	1200mm	701.010	401.010	272.84	E 271.06 (250mm) W 271.02 (200mm)
MH14A	1200mm	701.010	401.010	272.32	E 270.81 (200mm) SE 270.48 (200mm) NE 270.39 (200mm) NW 270.39 (200mm)
MH15A	1200mm	701.010	401.010	271.98	NE 270.44 (200mm) W 288.82 (1050mm) N 288.48 (1500mm)

STORM SEWER STRUCTURE INVENTORY					
MH #	MH DIAMETER	MH OPSD	FRAME OPSD	TOP ELEV.	INVERTS
CBMH1	1200mm	701.010	400.030	272.73	W 270.30 (250mm) N 271.12 (300mm)
CBMH2	1200mm	701.010	400.030	272.81	E 271.10 (250mm) N 271.01 (300mm)
CBMH3	1200mm	701.010	400.030	271.21	S 288.55 (450mm) E 288.59 (250mm) N 289.52 (450mm)
JELLYFISH	2400mm	JFB-2	Standard	271.28	W 289.28 (450mm) SW 289.42 (450mm)
MH1	3000mm	701.014	401.010	272.62	W 270.29 (1800mm)
MH2	3000mm	701.014	401.010	272.85	E 270.41 (1800mm)
MH3	2400mm X 2900mm	N/A	401.010	272.33	W 270.25 (1800mm) E 270.20 (1800mm) N 270.11 (1800mm)
MH4	2400mm X 2900mm	N/A	401.010	271.86	S 289.95 (1800mm) E 289.92 (1800mm)
MH5	3000mm	701.014	401.010	272.49	N 270.49 (1800mm)
MH6	3000mm	701.014	401.010	272.82	S 270.24 (1800mm) NE 270.18 (375mm)
MH7	1200mm	701.010	401.010	271.81	SW 270.12 (375mm) E 270.06 (375mm)
MH8	2400mm X 2900mm	N/A	401.010	271.41	S 289.76 (1800mm) W 289.74 (375mm) N 289.70 (450mm)
MH9	1200mm	701.010	401.010	271.66	SE 270.05 (250mm) W 289.99 (250mm)
MH10	1200mm	701.010	401.010	271.39	S 289.68 (450mm) E 289.71 (250mm) N 289.82 (450mm)
MH11	1200mm	701.010	401.010	271.20	S 289.55 (450mm) NE 289.44 (450mm) N 270.00 (450mm)
MH12	1200mm	701.010	401.010	271.28	S 289.96 (450mm) W 289.20 (450mm) E 289.27 (450mm)
MH13	2400mm	701.013	401.010	271.31	E 289.14 (450mm) W 288.82 (1050mm) N 288.48 (1500mm)

BROCK STREET EAST



LOCATION PLAN N.T.S.

LEGEND

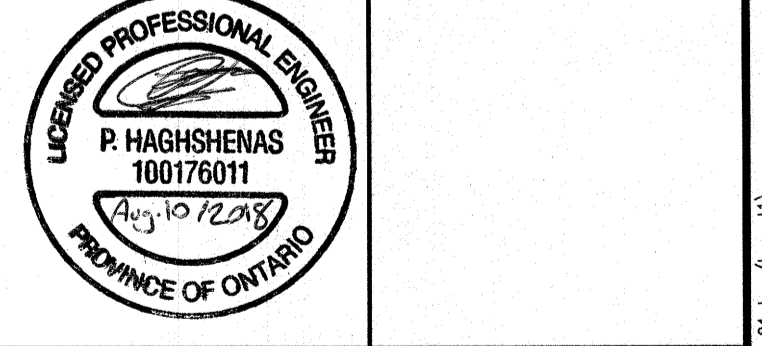
- PROPERTY LINE
- PROPOSED STORM PIPE
- PROPOSED SANITARY PIPE
- PROPOSED SANITARY MANHOLE
- PROPOSED STORM MANHOLE
- PROPOSED CATCH BASIN MANHOLE
- PROPOSED CATCH BASIN
- PROPOSED CGS
- EXISTING MANHOLE
- EXISTING CATCH BASIN
- PROPOSED VALVE AND BOX
- PROPOSED FIRE HYDRANT
- PROPOSED SIAMISE CONNECTION
- SUMP PUMP
- LOT NUMBER
- PROPOSED BACKFLOW PREVENTOR
- PROPOSED WATER METER

LIST OF DRAWINGS

SG-01 - SITE GRADING PLAN
SS-01 - SITE SERVICING PLAN

SITE PLAN INFORMATION	SURVEYOR INFORMATION
ICR ASSOCIATES INCORPORATED 12 SANDOUBINE CRESCENT TORONTO, ONTARIO L4K 4B5 PHONE: (416) 499-4427 E-MAIL: icr_des@gmail.com	H.F. GRANDER CO. LTD. 1375 HIGHWAY 7A WEST, UNIT 2A PORT PERRY, ONTARIO L2L 1A8 PHONE: (905) 986-5600 FAX: (905) 986-2347

NO.	REVISION	DATE	BY
1	ISSUED FOR ZONING APPROVAL	AUG 10, 2018	LMV



TOWN OF UXBRIDGE
REGIONAL MUNICIPALITY OF DURHAM

EVANDALE DEVELOPMENTS LTD.
SOUTH BROCK STREET DEVELOPMENT
UXBRIDGE, ONTARIO

SITE SERVICING PLAN

DESIGNED BY: LMV DATE: JUNE 2018 CHECKED BY: PH
 DRAWN BY: TVL PROJECT NO: 2018-0302 DRAWING NO: SS-01
 SCALE: 1:400