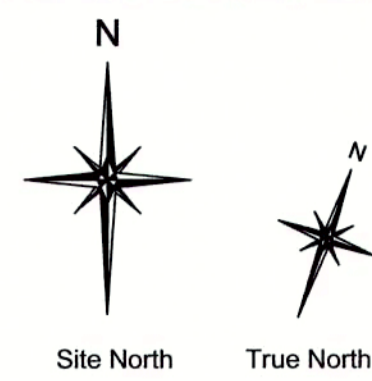
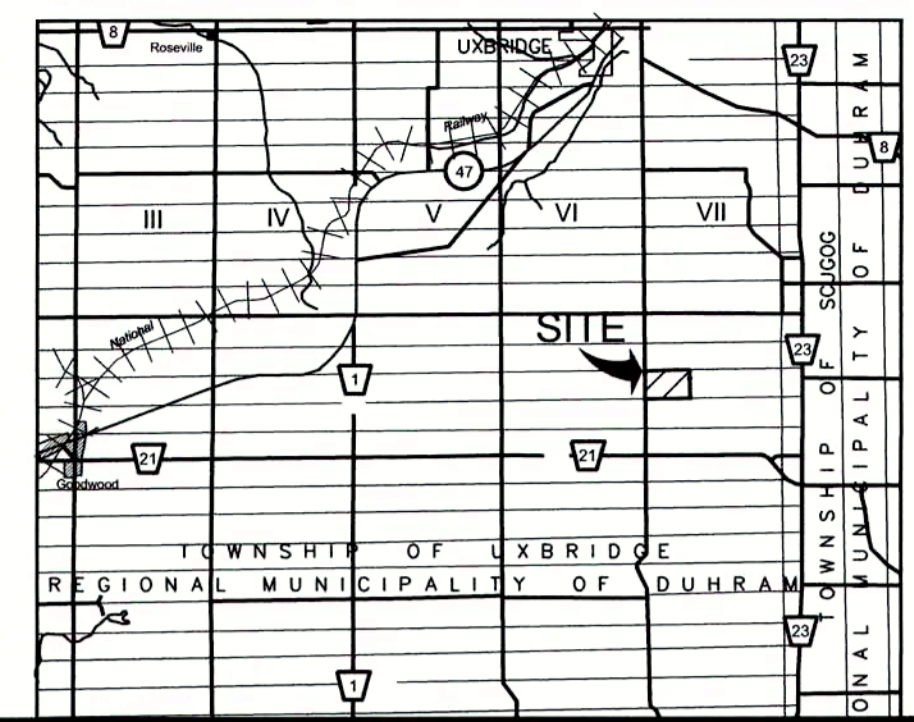
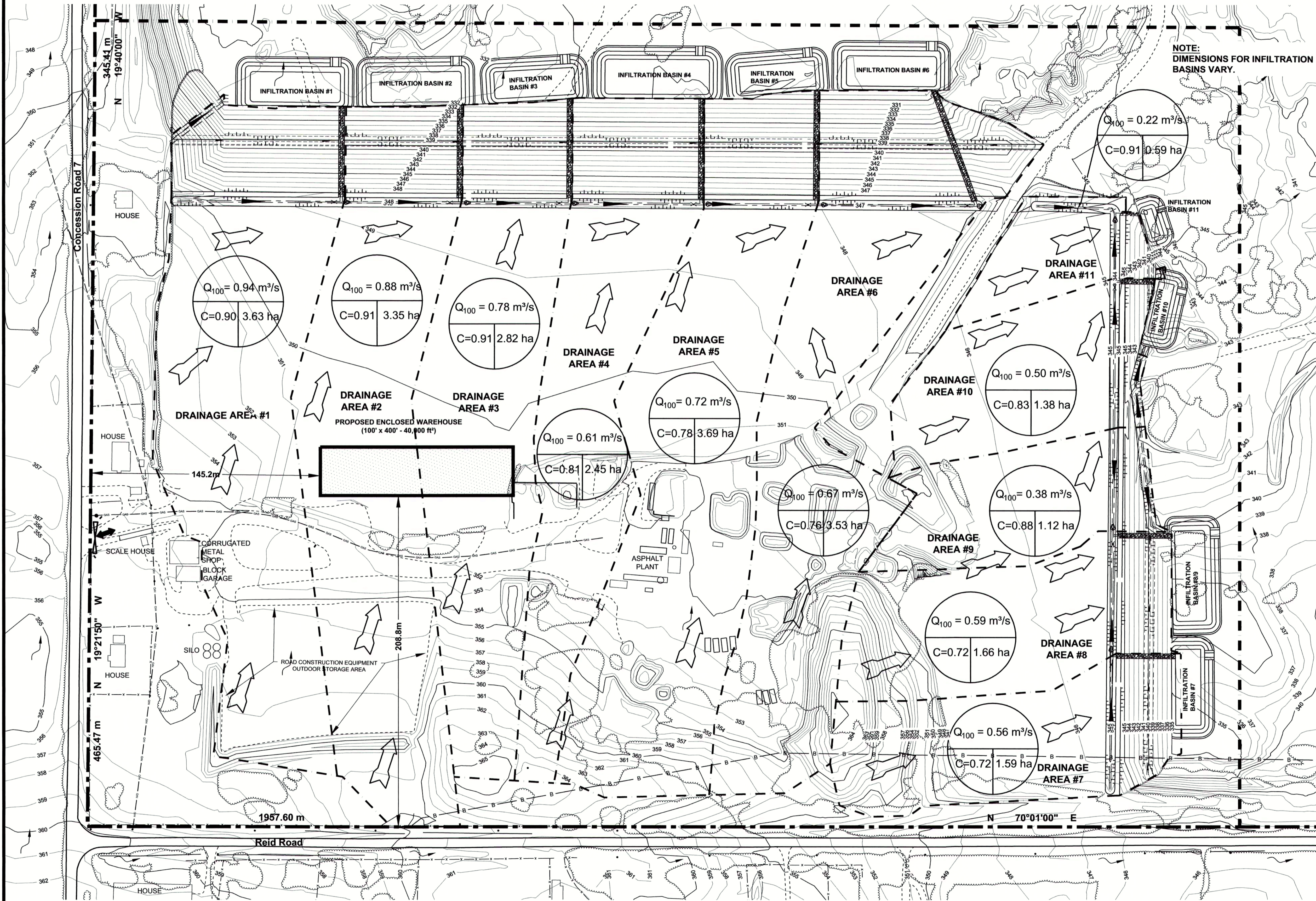


LOT 18, CONCESSION 7
GEOGRAPHIC TOWNSHIP OF UXBRIDGE
REGIONAL MUNICIPALITY OF DURHAM

Scale 1:1250



2412 - 4 of 11



KEY MAP
N.T.S.

LEGEND

- Property Boundary
- Proposed Fill Importation Boundary
- Internal Road
- Wooded Areas
- Overhead Hydro Lines
- Underground Gas Line
- Underground Bell Line
- Existing Post & Wire Fence
- Existing Building / Concrete Pad / Equipment Storage / Processing Area
- Contours (5.0 m)
- Contours (1.0 m)
- Pit Entrance / Exit
- Gate
- Stockpiled Material
- Natural Drainage
- Proposed Fill Slope Grade
- Bank Slope
- Drainage Areas
- Proposed Drainage Direction
- 100 Year Storm Flow
- Runoff Coefficient
- Proposed Rip Rap Channel
- Bio-Retention Strip (Grasses/ Sedges)

SCHEDULE OF REVISIONS

NO.	DATE	DESCRIPTION	CHECKED

M.J. BERTRAM
100159403
PROVINCE OF ONTARIO

J.A. CLARK
100159403
PROVINCE OF ONTARIO

MILLER PAVING LIMITED
BOYINGTON PIT #3
FILL IMPORTATION UNDER SITE PLAN CONTROL
4419 CONCESSION ROAD 7
TOWNSHIP OF UXBRIDGE
POST-DEVELOPMENT MAJOR DRAINAGE CATCHMENTS

PROJECT NO. 10 - 2412	DRWG NO. 2412 - 4 of 11
DATE: MARCH 2019	SCALE: 1:1250
DRAWN: MJB	CHECKED: APPROVED:

SBA Skelton Brumwell & Associates Inc.
ENGINEERING PLANNING ENVIRONMENTAL CONSULTANTS
93 Bell Farm Road, Suite 107
Barrie, Ontario L4M 5G1
www.skeltonbrumwell.ca
Telephone (705) 726-1141
Fax (705) 726-0331
Toll Free (877) 726-1141

Copyright © 2016 Skelton Brumwell & Associates Inc. All rights reserved. This document is protected by copyright laws and may not be reproduced in any manner, or for any purpose, except with the written permission of the copyright holder.