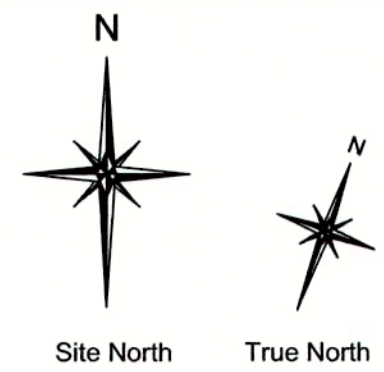
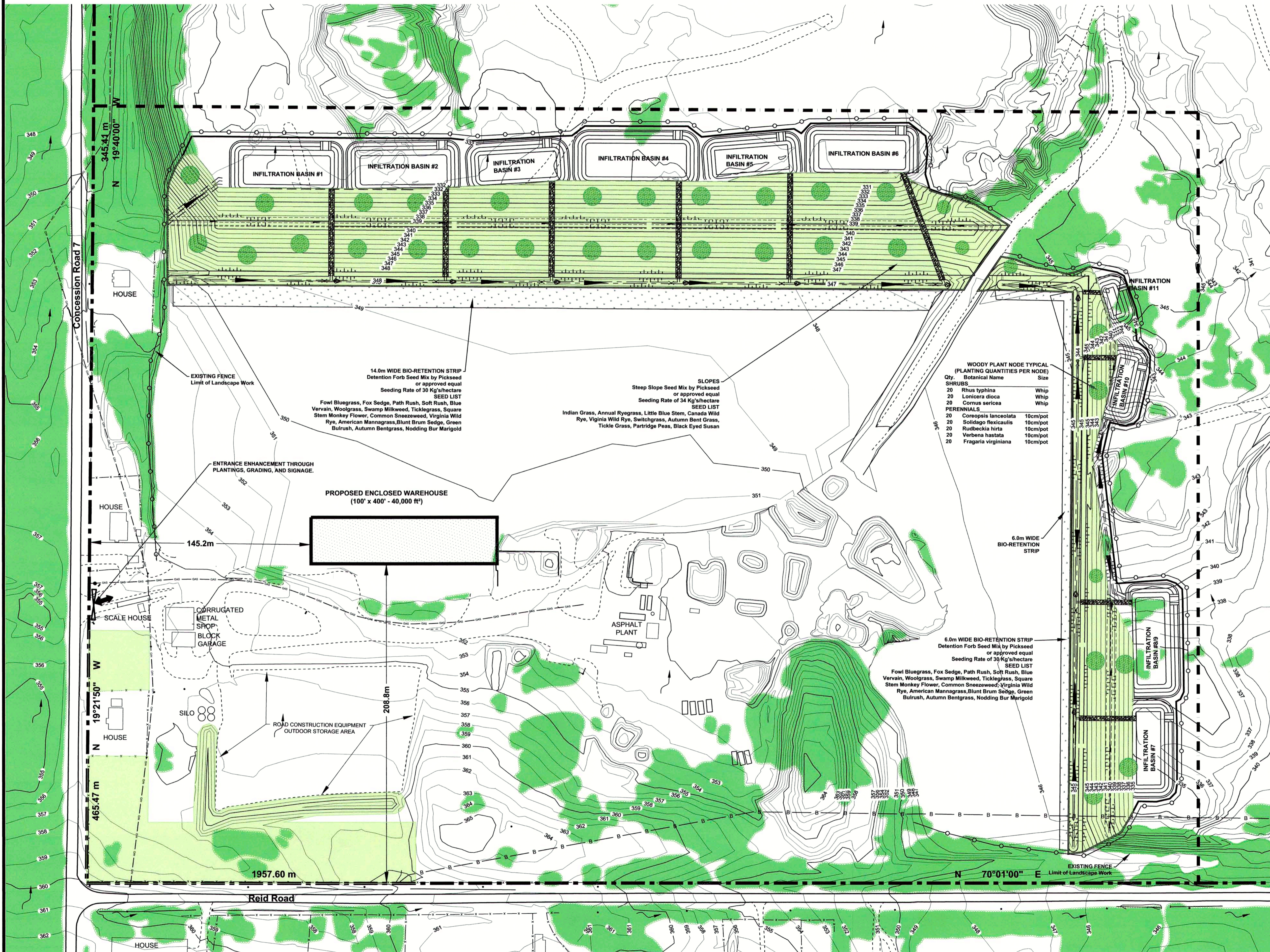


LOT 18, CONCESSION 7
GEOGRAPHIC TOWNSHIP OF UXBRIDGE
REGIONAL MUNICIPALITY OF DURHAM

Scale 1:1250

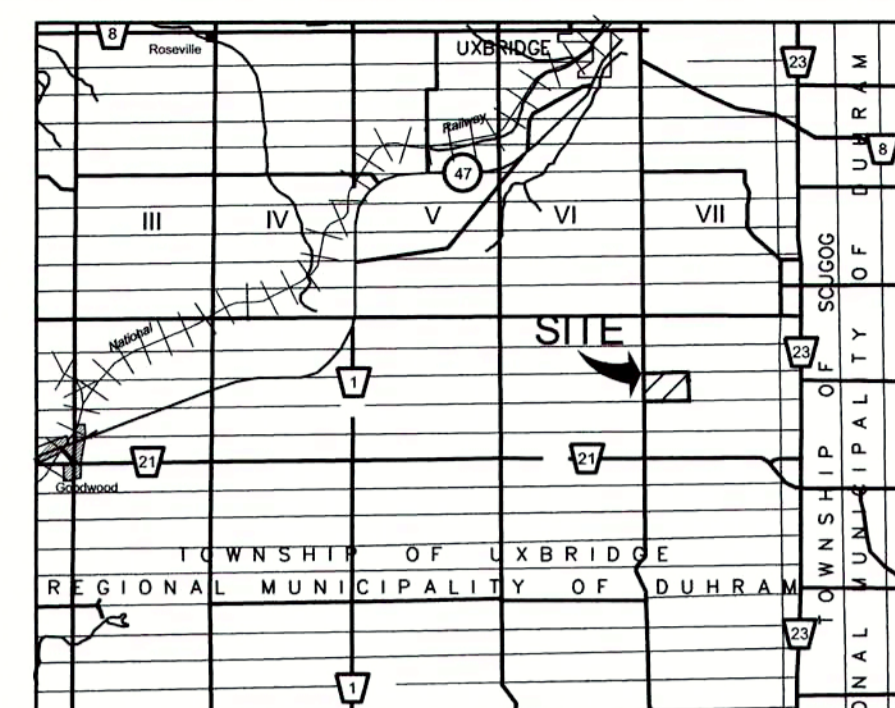


2412 - 10 of 11



WOODY PLANT NODE TYPICAL (PLANTING QUANTITIES PER NODE)

Qty.	Botanical Name	Size
SHRUBS		
20	Rhus typhina	Whip
20	Lonicera dioica	Whip
20	Cornus sericea	Whip
PERENNIALS		
20	Coreopsis lanceolata	10cm/pot
20	Solidago flexicaulis	10cm/pot
20	Rudbeckia hirta	10cm/pot
20	Verbena hastata	10cm/pot
20	Fragaria virginiana	10cm/pot



KEY MAP
N.T.S.
LEGEND

- Property Boundary
- Internal Road
- Wooded Areas
- Overhead Hydro Lines
- Underground Gas Line
- Underground Bell Line
- Existing Post & Wire Fence
- Existing Building / Concrete Pad / Equipment Storage / Processing Area
- Contours (5.0 m)
- Contours (1.0 m)
- Pit Entrance / Exit
- Stockpiled Material
- Natural Drainage
- Proposed Fill Slope Grade
- Bank Slope
- Rip Rap Channel
- Proposed Silt Fence
- Bio-Retention Strip (Grasses/ Sedges)
- Woody Plant Node
- Vegetation Enhancement Areas (native, non-invasive species)

Note: Landscape plan completed in partnership with George Antoniuk, Landscape Architect.

SCHEDULE OF REVISIONS

NO.	DATE	DESCRIPTION	CHECKED



MILLER PAVING LIMITED
BOYINGTON PIT #3
FILL IMPORTATION UNDER SITE PLAN CONTROL
4499-4589 CONCESSION ROAD 7
TOWNSHIP OF UXBRIDGE
PLANTING PLAN

PROJECT NO. 10 - 2412	DRWG NO. 2412 - 10 of 11
DATE: MARCH 2019	SCALE: 1:1250
DRAWN: MJB	CHECKED: APPROVED:

SBA Skelton Brumwell & Associates Inc.
ENGINEERING PLANNING ENVIRONMENTAL CONSULTANTS
93 Bell Farm Road, Suite 107
Barrie, Ontario L4M 5G1
www.skeltonbrumwell.ca
Telephone (705) 726-1141
Fax (705) 726-0331
Toll Free (877) 726-1141

Copyright © 2016 Skelton Brumwell & Associates Inc. All rights reserved. This document is protected by copyright laws and may not be reproduced in any manner, or for any purpose, except with the written permission of the copyright holder.