

# PLANT LIST – RESTORATION

KEY	QTY.	BOTANICAL NAME	COMMON NAME	CAL. (mm)	HT. (cm)	SPREAD (cm)	ROOTS (cm)	REMARKS
AS250	4	<i>Acer saccharum</i>	Sugar Maple	-	250	-	CG / FP	-
CO250	2	<i>Carya cordiformis</i>	Bitternut Hickory	-	250	-	CG / FP	-
OV250	5	<i>Ostrya virginiana</i>	Ironwood	-	250	-	CG / FP	-
TA250	4	<i>Tilia americana</i>	Basswood	-	250	-	CG / FP	-
TAS	5	<i>Tilia americana</i>	Basswood	45	-	-	WB	-

## CONIFEROUS TREES

PS150	3	<i>Pinus strobus</i>	Eastern White Pine	-	150	-	WB	-
-------	---	----------------------	--------------------	---	-----	---	----	---

## DECIDUOUS SHRUBS

AC100	37	<i>Amelanchier canadensis</i>	Serviceberry	-	100	50	3 gal. pot	-
AMCS0	31	<i>Aronia melanocarpa</i>	Chokeberry	-	50	30	3 gal. pot	-
CR100	21	<i>Cornus racemosa</i>	Gray Dogwood	-	100	50	3 gal. pot	-
PO80	14	<i>Physocarpus opulifolius</i>	Ninebark	-	80	40	3 gal. pot	-
PR80	44	<i>Prunus virginiana</i>	Chokecherry	-	80	40	3 gal. pot	-
RT80	36	<i>Rhus typhina</i>	Staghorn Sumac	-	80	40	3 gal. pot	-
SC80	8	<i>Sambucus canadensis</i>	Elderberry	-	80	50	3 gal. pot	-

WB - WIRE BASKET CG - CONTAINER GROWN FP - FIELD POTTED pot - POT GROWN

# PLANT LIST – EDGE REINFORCEMENT

KEY	QTY.	BOTANICAL NAME	COMMON NAME	CAL. (mm)	HT. (cm)	SPREAD (cm)	ROOTS (cm)	REMARKS
AS150	12	<i>Acer saccharum</i>	Sugar Maple	-	150	-	CG / FP	-
FG150	6	<i>Fagus grandifolia</i>	American Beech	-	150	-	CG / FP	-
TA150	6	<i>Tilia americana</i>	Basswood	-	150	-	CG / FP	-

## DECIDUOUS SHRUBS

AC60	20	<i>Amelanchier canadensis</i>	Serviceberry	-	60	30	3 gal. pot	-
CC60	20	<i>Corylus cornuta</i>	Beaked Hazelnut	-	60	30	3 gal. pot	-
HW60	20	<i>Hamamelis virginiana</i>	Witchhazel	-	60	30	3 gal. pot	-
PR60	40	<i>Prunus virginiana</i>	Chokecherry	-	60	30	3 gal. pot	-
SA60	20	<i>Symphoricarpos albus</i>	Snowberry	-	60	30	3 gal. pot	-

WB - WIRE BASKET CG - CONTAINER GROWN FP - FIELD POTTED pot - POT GROWN

# PLANT LIST – BUFFER PLANTING

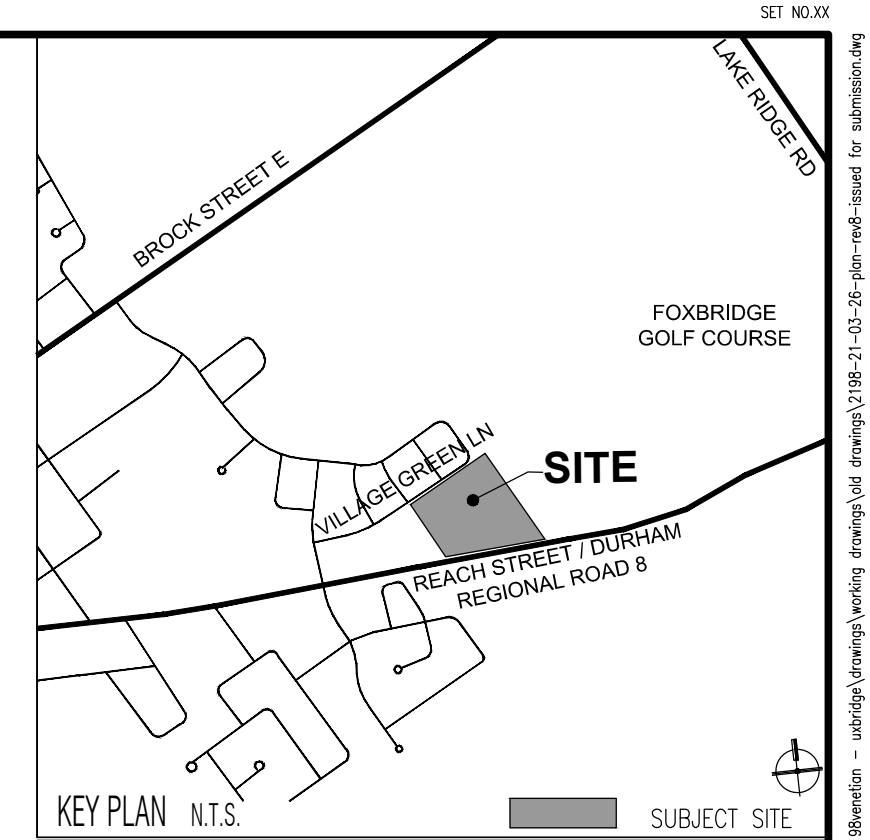
BUFFER PLANTING ALSO SHOWN ON LANDSCAPE PLAN L1

KEY	QTY.	BOTANICAL NAME	COMMON NAME	CAL. (mm)	HT. (cm)	SPREAD (cm)	ROOTS (cm)	REMARKS
AS60	10	<i>Acer saccharum</i>	Sugar Maple	60	-	-	WB	-

## DECIDUOUS SHRUBS

AC100	7	<i>Amelanchier canadensis</i>	Serviceberry	-	100	50	3 gal. pot	-
CR100	10	<i>Cornus racemosa</i>	Gray Dogwood	-	100	50	3 gal. pot	-
CS100	10	<i>Cornus stolonifera</i>	Red-Osier Dogwood	-	100	50	3 gal. pot	-
PO80	9	<i>Physocarpus opulifolius</i>	Ninebark	-	80	40	3 gal. pot	-
PR80	8	<i>Prunus virginiana</i>	Chokecherry	-	80	40	3 gal. pot	-
SC80	9	<i>Sambucus canadensis</i>	Elderberry	-	80	50	3 gal. pot	-

WB - WIRE BASKET CG - CONTAINER GROWN FP - FIELD POTTED pot - POT GROWN



## LEGEND

- PROPERTY LINE
- SEED MIX - EDGE & FRINGE
- PROPOSED LID GRANULAR (REFER TO SERVING PLAN BY SKA ENGINEERING LTD)
- EXISTING DECIDUOUS TREE TO REMAIN (REFER TO TREE INVENTORY AND ASSESSMENT PLAN)
- EXISTING CONIFEROUS TREE TO REMAIN (REFER TO TREE INVENTORY AND ASSESSMENT PLAN)
- PLANT SPECIES DECIDUOUS TREE PLANTING - SIZE
- PLANT SPECIES CONIFEROUS TREE PLANTING - SIZE
- DECIDUOUS SHRUBS PLANTING
- WOODLAND
- HAZARDOUS TREE MONITORING ZONE
- EDGE REINFORCEMENT PLANTING ZONE

## EDGE MANAGEMENT PROGRAM

### HAZARDOUS TREE MONITORING ZONE (15M FROM RESIDENTIAL LOTS)

- The Hazardous Tree Monitoring Zone will be evaluated after site removals are completed by a Certified Arborist with qualification in hazardous tree assessment. The Arborist will submit a report including the inventory of all hazardous trees which warrant immediate removal. This report will be submitted to Township of Uxbridge and LSRC for review and approval. The report is to include tree removal procedures to minimize impact to the forest edge. Tree removals will be completed as expeditiously as possible and coordinated with the nesting bird studies as required.
- A monitoring report by a qualified Arborist shall be completed in June of each year following the tree clearing to review and determine the presence of any new hazardous trees and their removal procedures. This report will be submitted to Township of Uxbridge and LSRC for review and approval. Any tree removal requirements to be undertaken expeditiously.
- Monitoring reports to be prepared each successive year until the project is certified complete.

### EDGE REINFORCEMENT PLANTING ZONE

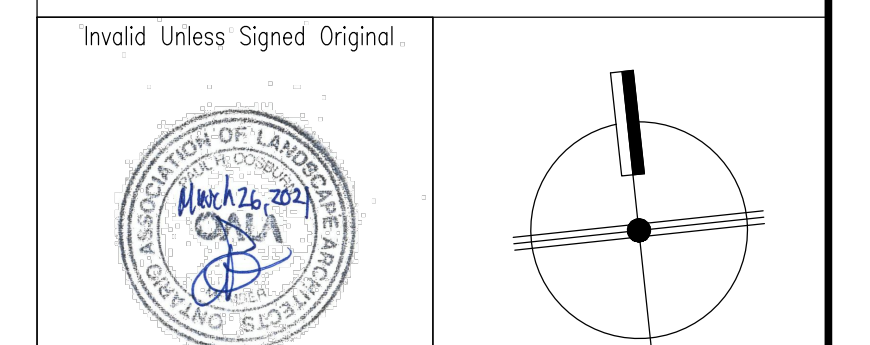
- The newly created woodland edge will have opportunities for reinforcement plants of tree and shrubs dispersed along its length. The total length of the Edge Reinforcement Planting zone is 239m encompassing both woodland areas. A planting rate of 1 tree/10m for trees and 1 shrub/2m along forest edge is recommended.
- Planting locations are to be determined on a site specific basis where openings exist in the forested edge or as openings are created through the removal of hazardous trees.
- Tree plantings are recommended for planting individually. Shrub plantings are recommended in small groups of 3-5 of the same species.

### Base Information

Topographic survey information received in digital format from ERLI Surveys and received on November 28, 2017.  
Site plan, grading & servicing information received in digital format from SKA Engineering Ltd, Project No. 17-386 and received on March 25, 2021.  
Electrical information received in digital format from RTG Systems Inc., Sheet No. SL-1 and received on March 25 2021.

8	Issued for Submission	CMO	21 03 26
7	Issued for Submission	SW	21 03 17
6	Issued for Submission	CMO	21 02 25
5	For LSRC Submission	CMO	20 08 17
4	For Submission to LSRC	SW	20 08 20
No	Revision	By	Yr Mo Da

All drawings and designs are the property of Cosburn Nauboris Limited and may not be used or reproduced without permission. This drawing must not be scaled.

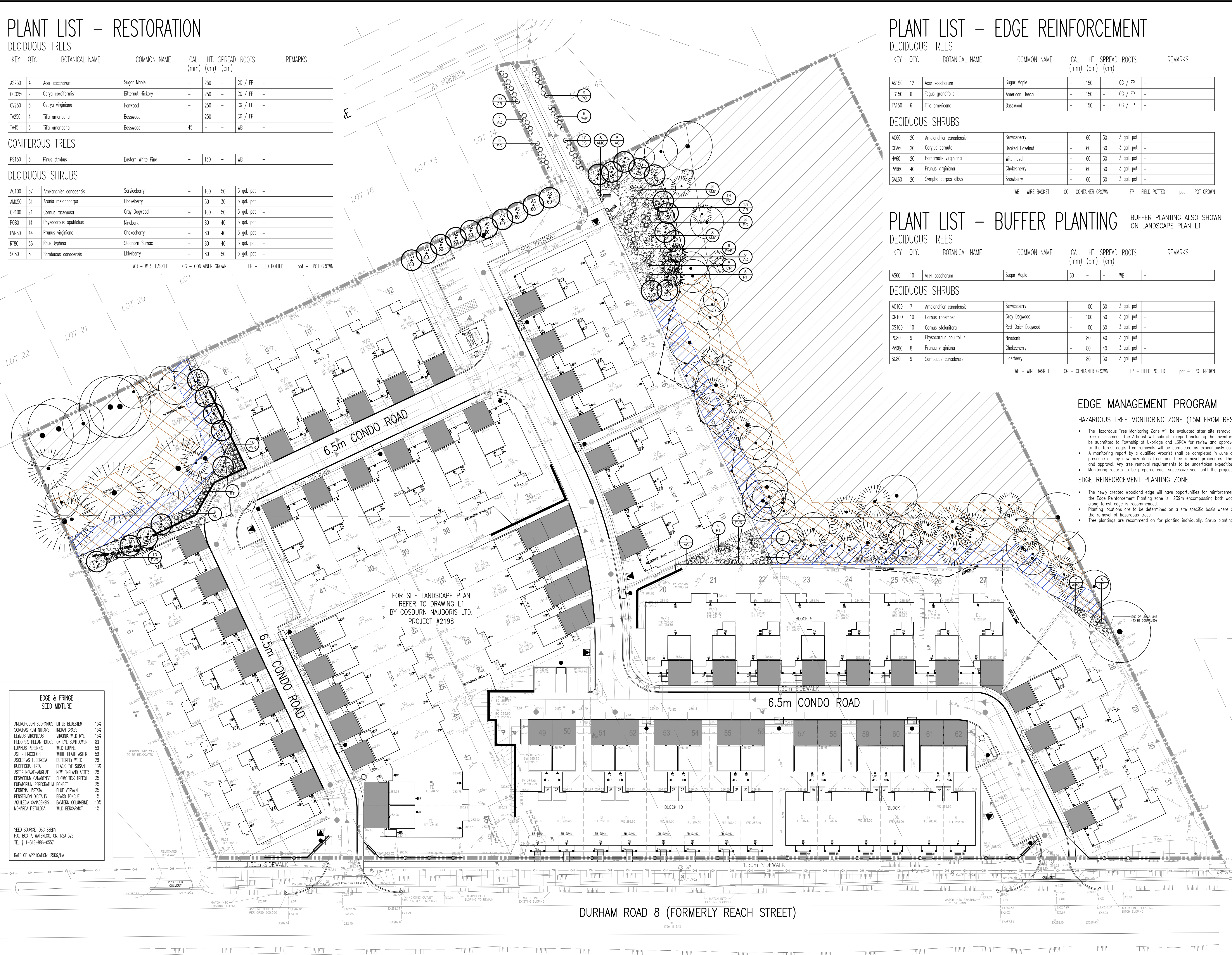


**cosburn nauboris LTD**  
landscape architects  
20 crown steel dr. suite 2  
markham, ON L3R 9A9  
1 905 940 4443  
cosburnnauboris.ca

24 REACH STREET  
VENETIAN GROUP  
TOWNSHIP OF UXBRIDGE

## LANDSCAPE RESTORATION AND EDGE MANAGEMENT PLAN

Drawn by	MR	Scale	1:400	LR1
Checked by	PHC	Plot Date	2021-03-26	
Approved by	PHC	Project	2198	



### EDGE & FRINGE SEED MIXTURE

ANDROPOGON SCOPARIUS	LITTLE BLUESTEM	15%
SCORPASTRUM MITANS	INDIAN GRASS	15%
ELIMIS VIRGINICUS	VIRGINIA WILD RYE	15%
HELOPSIS HELANTHOIDES	OX EYE SUNFLOWER	8%
LUPINUS PERENNIS	WILD LUPINE	5%
ASTER ERIOIDES	WHITE HEATH ASTER	5%
ASCLYPIAS TUBEROSA	BUTTERFLY WEED	2%
RUBRODIA HIRT	BLACK EYE SUSAN	13%
ASTER NOVAE-ANGIAE	NEW ENGLAND ASTER	2%
OSMODOM CANADENSE	SHOWY TOX TREFOIL	3%
ESPARANTRUM PERFORATUM	BONSET	2%
VERONICA HEDERA	BLUE VERONICA	3%
PENSTEMON DIGITALIS	BEARD TONGUE	1%
AQUILEGA CANADENSIS	EASTERN COLUMBINE	10%
MONARDA FISTULOSA	WILD BERGAMOT	1%

SEED SOURCE: OSC SEEDS  
P.O. BOX 7, WATERLOO, ON, N2J 3J6  
TEL # 1-519-886-0557

RATE OF APPLICATION: 25kg/HA

DURHAM ROAD 8 (FORMERLY REACH STREET)