

# PLANT LIST - SITE

### DECIDUOUS TREES

KEY	QTY.	BOTANICAL NAME	COMMON NAME	CAL. (mm)	HT. (cm)	SPREAD (cm)	ROOTS	REMARKS
ARB60	4	Acer rubrum 'Bowhall'	Bowhall Red Maple	60	-	-	WB	-
ARK60	6	Acer rubrum 'Karpick'	Karpick Maple	60	-	-	WB	-
ASC60	5	Acer saccharum 'Columnare'	Columnar Sugar Maple	60	-	-	WB	-
ASE60	18	Acer saccharum 'Endowment'	Endowment Sugar Maple	60	-	-	WB	-
CO60	2	Celtis occidentalis	Hockberry	60	-	-	WB	-
CO160	12	Celtis occidentalis 'Prairie Sentinel'	Prairie Sentinel Hockberry	60	-	-	WB	-
CO60	4	Gymnocladus dioica	Kentucky Coffee Tree	60	-	-	WB	-
LF60	7	Liriodendron tulipifera 'castigatum'	Columnar Tulip Tree	60	-	-	WB	-
OV60	1	Ostrya virginiana	Ironwood	60	-	-	WB	-
PC60	10	Pyrus calleryana 'Glen's Farm'	Chanticleer Ornamental Pear	60	-	-	WB	-
QRU60	5	Quercus rubra	Red Oak	60	-	-	WB	-
SO60	5	Sorbus decora	Showy Mountainash	60	-	-	WB	-
SRI60	10	Syringa reticulata 'Ivory Silk'	Ivory Silk Tree Lilac	60	-	-	WB	-
TA60	3	Tilia americana	Basswood	60	-	-	WB	-
TAR60	2	Tilia americana 'Redmond'	Redmond Linden	60	-	-	WB	-

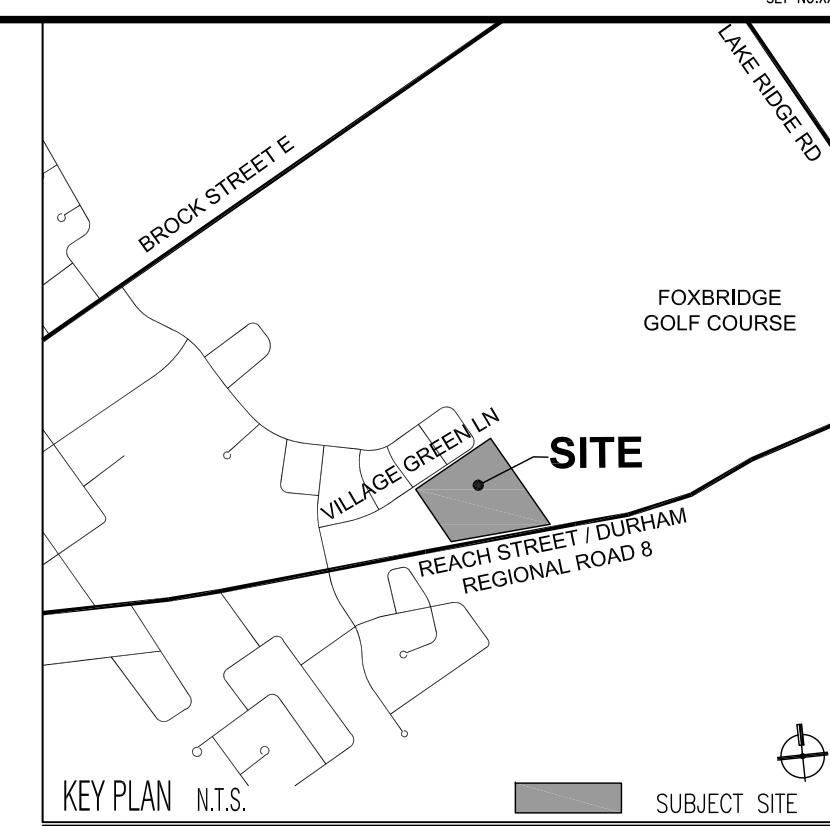
### CONIFEROUS TREES

TO180	28	Thuja occidentalis	White Cedar	-	180	-	WB	-
-------	----	--------------------	-------------	---	-----	---	----	---

### DECIDUOUS SHRUBS

AC150	13	Ametancher canadensis	Serviceberry	-	150	100	WB	Clump
SAL100	38	Symphoricarpos albus	Snowberry	-	100	50	3 gal. pot	-

WB - WIRE BASKET    CO - CONTAINER CROWN    FP - FIELD POTTED    pot - POT GROWN



### LEGEND

- PROPERTY LINE
- ACOUSTIC FENCE
- PRIVACY WOOD FENCE
- CHAIN LINK FENCE
- DECORATIVE METAL FENCE
- GATE
- BENCH
- CONCRETE PAVING
- UNIT CONCRETE SLAB PAVING
- RIVER RUN STONE
- PROPOSED LID GRANULAR (REFER TO SERVING PLAN BY SKA ENGINEERING LTD)
- SOD
- EXISTING DECIDUOUS TREE TO REMAIN (REFER TO TREE INVENTORY AND ASSESSMENT PLAN)
- EXISTING CONIFEROUS TREE TO REMAIN (REFER TO TREE INVENTORY AND ASSESSMENT PLAN)
- PLANT SPECIES
- DECIDUOUS TREE PLANTING SIZE
- DECIDUOUS SHRUBS PLANTING
- WOODLAND
- STOP SIGN (REFER TO SIGNAGE & PAVEMENT MARKINGS PLAN BY NEXTTRANS)

**Base Information**

Topographic survey information received in digital format from ERTL Surveyors and received on November 28, 2017.  
 Site plan information received in digital format from Hunt Design Associates, Project No. 17-386 and received on September 21, 2021.  
 Grading and servicing information received in digital format from SKA Engineering, Project No. 17-386 and received on October 8, 2021.  
 Electrical information received in digital format from RTG Systems, Project No. 05239 and received on September 29, 2021.

9	Issued for Submission	SW	21 10 12
8	Issued for Submission	CMO	21 03 26
7	Issued for Submission	SW	21 03 17
6	Issued for Submission	CMO	21 02 25
5	For LSRA Submission	CMO	21 02 17
No	Revision	By	Yr Mo Da

All drawings and designs are the property of Cosburn Nauboris Limited and may not be used or reproduced without permission. This drawing must not be scaled.

Invalid Unless Signed Original

**cosburn nauboris LTD**  
 landscape architects  
 20 crown street dr. suite 2  
 markham, on L3R 9V9  
 1 905 940 4443  
 cosburnnauboris.ca

**24 REACH STREET**  
 VENETIAN GROUP  
 TOWNSHIP OF UXBRIDGE

### LANDSCAPE PLAN

Drawn by	MR	Scale	1:400
Checked by	PHC	Plot Date	2021-10-12
Approved by	PHC	Project	2198

L1

Drawing No.

SET NO. XX  
 LANE RIDGE RD  
 FOXBRIDGE GOLF COURSE  
 VILLAGE GREEN LN  
 REACH STREET / DURHAM REGIONAL ROAD 8  
 SUBJECT SITE  
 KEY PLAN N.T.S.  
 LEGEND  
 Base Information  
 Invalid Unless Signed Original  
 cosburn nauboris LTD  
 landscape architects  
 24 REACH STREET  
 VENETIAN GROUP  
 TOWNSHIP OF UXBRIDGE  
 LANDSCAPE PLAN  
 Drawn by MR Scale 1:400  
 Checked by PHC Plot Date 2021-10-12  
 Approved by PHC Project 2198  
 L1  
 Drawing No.



# PLANT LIST - RESTORATION

## DECIDUOUS TREES

KEY	QTY.	BOTANICAL NAME	COMMON NAME	CAL. (mm)	HT. (cm)	SPREAD (cm)	ROOTS (cm)	REMARKS
AS250	4	Acer saccharum	Sugar Maple	-	250	-	CG / FP	-
CO250	2	Carya cordiformis	Bitternut Hickory	-	250	-	CG / FP	-
OZ250	5	Ostrya virginiana	Ironwood	-	250	-	CG / FP	-
TA250	4	Tilia americana	Basswood	-	250	-	CG / FP	-
TA45	5	Tilia americana	Basswood	45	-	-	WB	-

## CONIFEROUS TREES

FS150	3	Pinus strobus	Eastern White Pine	-	150	-	WB	-
-------	---	---------------	--------------------	---	-----	---	----	---

## DECIDUOUS SHRUBS

AC100	37	Amelanchier canadensis	Serviceberry	-	100	50	3 gal. pot	-
AMC50	31	Aronia melanocarpa	Chokeberry	-	50	30	3 gal. pot	-
CR100	21	Cornus racemosa	Gray Dogwood	-	100	50	3 gal. pot	-
PO80	27	Physocarpus opulifolius	Ninebark	-	80	40	3 gal. pot	-
PVR80	44	Prunus virginiana	Chokecherry	-	80	40	3 gal. pot	-
RT80	36	Rhus typhina	Staghorn Sumac	-	80	40	3 gal. pot	-
SC80	8	Sambucus canadensis	Elderberry	-	80	50	3 gal. pot	-

WB - WIRE BASKET CG - CONTAINER GROWN FP - FIELD POTTED pot - POT GROWN

# PLANT LIST - EDGE REINFORCEMENT

## DECIDUOUS TREES

KEY	QTY.	BOTANICAL NAME	COMMON NAME	CAL. (mm)	HT. (cm)	SPREAD (cm)	ROOTS (cm)	REMARKS
AS150	12	Acer saccharum	Sugar Maple	-	150	-	CG / FP	-
FG150	6	Fagus grandifolia	American Beech	-	150	-	CG / FP	-
TA150	6	Tilia americana	Basswood	-	150	-	CG / FP	-

## DECIDUOUS SHRUBS

AC60	20	Amelanchier canadensis	Serviceberry	-	60	30	3 gal. pot	-
CA60	20	Corylus cornuta	Beaked Hazelnut	-	60	30	3 gal. pot	-
HW60	20	Hamamelis virginiana	Witchhazel	-	60	30	3 gal. pot	-
PVR60	40	Prunus virginiana	Chokecherry	-	60	30	3 gal. pot	-
SAL60	20	Symphoricarpos albus	Snowberry	-	60	30	3 gal. pot	-

WB - WIRE BASKET CG - CONTAINER GROWN FP - FIELD POTTED pot - POT GROWN

# PLANT LIST - BUFFER PLANTING

## DECIDUOUS TREES

KEY	QTY.	BOTANICAL NAME	COMMON NAME	CAL. (mm)	HT. (cm)	SPREAD (cm)	ROOTS (cm)	REMARKS
AS60	5	Acer saccharum	Sugar Maple	60	-	-	WB	-

## DECIDUOUS SHRUBS

AC100	7	Amelanchier canadensis	Serviceberry	-	100	50	3 gal. pot	-
CR100	10	Cornus racemosa	Gray Dogwood	-	100	50	3 gal. pot	-
CS100	10	Cornus stolonifera	Red-Osier Dogwood	-	100	50	3 gal. pot	-
PO80	9	Physocarpus opulifolius	Ninebark	-	80	40	3 gal. pot	-
PVR80	8	Prunus virginiana	Chokecherry	-	80	40	3 gal. pot	-
SC80	9	Sambucus canadensis	Elderberry	-	80	50	3 gal. pot	-

WB - WIRE BASKET CG - CONTAINER GROWN FP - FIELD POTTED pot - POT GROWN

## EDGE MANAGEMENT PROGRAM

### HAZARDOUS TREE MONITORING ZONE (15M FROM RESIDENTIAL LOTS)

- The Hazardous Tree Monitoring Zone will be evaluated after site removals are completed by a Certified Arborist with qualification in hazardous tree assessment. The Arborist will submit a report including the inventory of all hazardous trees which warrant immediate removal. This report will be submitted to Township of Uxbridge and LSRC for review and approval. The report is to include tree removal procedures to minimize impact to the forest edge. Tree removals will be completed as expeditiously as possible and coordinated with the nesting bird studies as required.
- A monitoring report by a qualified Arborist shall be completed in June of each year following the tree clearing to review and determine the presence of any new hazardous trees and their removal procedures. This report will be submitted to Township of Uxbridge and LSRC for review and approval. Any tree removal requirements to be undertaken expeditiously.
- Monitoring reports to be prepared each successive year until the project is certified complete.

### EDGE REINFORCEMENT PLANTING ZONE

- The newly created woodland edge will have opportunities for reinforcement plants of tree and shrub dispersed along its length. The total length of the Edge Reinforcement Planting zone is 235m encompassing both woodland areas. A planting rate of 1 tree/10m for trees and 1 shrub/2m along forest edge is recommended.
- Planting locations are to be determined on a site specific basis where openings exist in the forested edge or as openings are created through the removal of hazardous trees.
- Tree plantings are recommended for planting individually. Shrub plantings are recommended in small groups of 3-5 of the same species.

### Base Information

Topographic survey information received in digital format from ERTL Surveyors and received on November 28, 2017.  
 Site plan information received in digital format from Hunt Design Associates, Project No. 17-386 and received on September 21, 2021.  
 Grading and servicing information received in digital format from SKA Engineering, Project No. 17-386 and received on October 8, 2021.  
 Electrical information received in digital format from RTG Systems, Project No. 05239 and received on September 29, 2021.

9	Issued for Submission	SW	21 10 12
8	Issued for Submission	CMO	21 03 26
7	Issued for Submission	SW	21 03 17
6	Issued for Submission	CMO	21 02 25
5	For LSRC Submission	CMO	21 02 17
No	Revision	By	Yr Mo Da

All drawings and designs are the property of Cosburn Naboris Limited and may not be used or reproduced without permission. This drawing must not be scaled.

Invalid Unless Signed Original

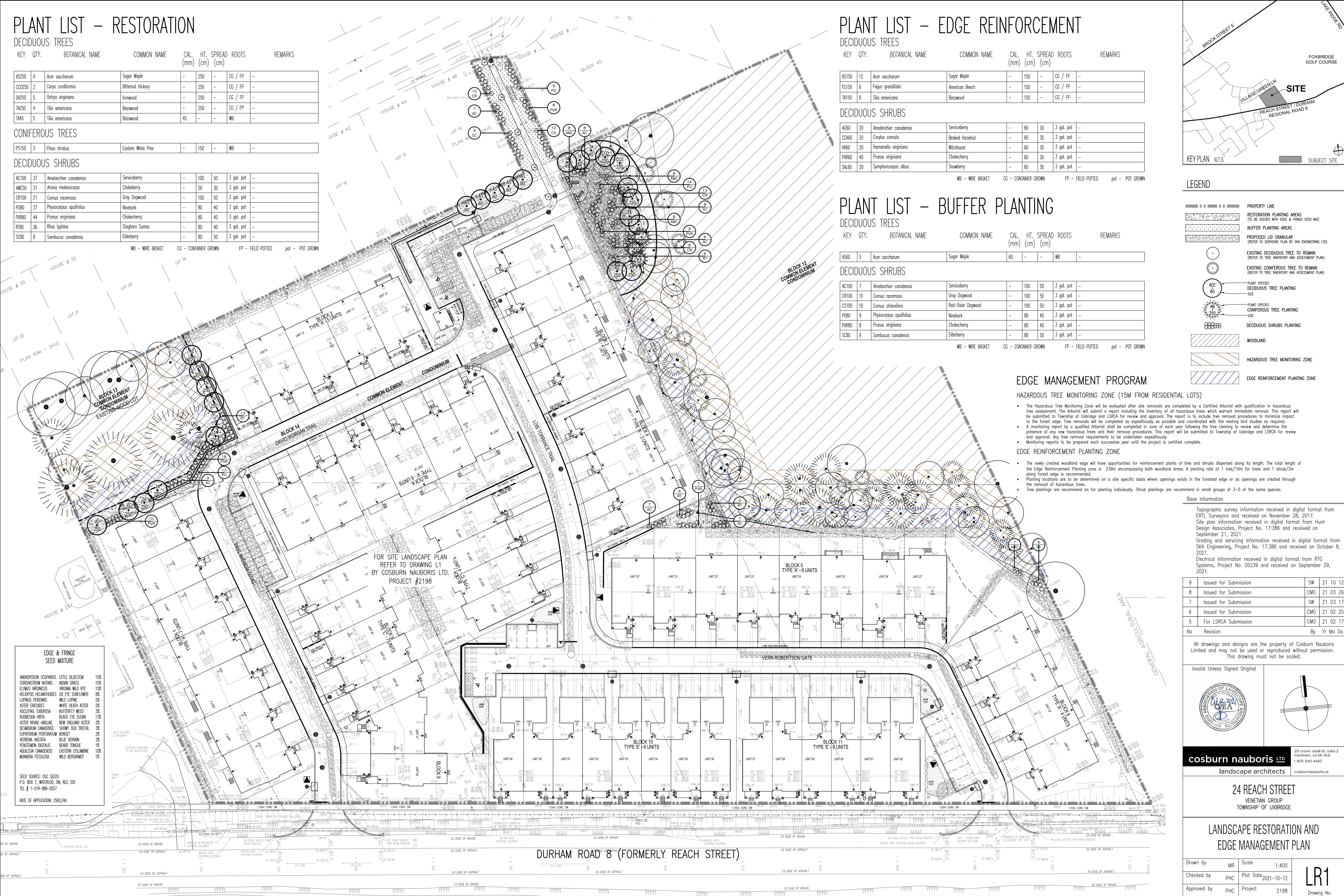
**cosburn naboris LTD**  
 landscape architects  
 20 crown street dr. suite 2  
 markham, on L3R 9V9  
 1 905 940 4443  
 cosburnnaboris.ca

**24 REACH STREET**  
 VENETIAN GROUP  
 TOWNSHIP OF UXBRIDGE

## LANDSCAPE RESTORATION AND EDGE MANAGEMENT PLAN

Drawn by	MR	Scale	1:400
Checked by	PHC	Plot Date	2021-10-12
Approved by	PHC	Project	2198

**LR1**  
 Drawing No.



FOR SITE LANDSCAPE PLAN REFER TO DRAWING L1 BY COSBURN NABORIS LTD. PROJECT #2198

### EDGE & FRINGE SEED MIXTURE

ANDROPOGON SCOPARIUS	LITTLE BLUESTEM	15%
SORGHASTRUM NUTANS	INDIAN GRASS	15%
ELYMUS VIRGATICUS	VIRGINIA WILD RYE	15%
HELIOPSIS HELANTHOIDES	OX EYE SUNFLOWER	8%
LUPINUS PERENNIS	WILD LUPINE	5%
ASTER ERIOCHLOIS	WHITE HEATH ASTER	5%
ASOLEPAS TUBEROSA	BUTTERFLY WEED	2%
RUEBECKIA HIRTIA	BLACK EYE SUSAN	13%
ASTER MOINE-ANGLARE	NEW ENGLAND ASTER	2%
SEMBICKIA CANADENSIS	SHOWY TOP TREETOP	3%
ELIPATORUM PERFORATUM	BONSET	2%
VERBENA HASTATA	BLUE VERVAIN	3%
POTENTILLON DIGITALIS	BEARD TONGUE	1%
AGILELIA CANADENSIS	EASTERN COLICLINE	10%
MONARDA FISTULOSA	WILD BERGAMOT	1%

SEED SOURCE: OSC SEEDS  
 P.O. BOX 7, WATERLOO, ON, N2A 3Z6  
 TEL # 1-519-886-0557

RATE OF APPLICATION: 25KG/HA

DURHAM ROAD 8 (FORMERLY REACH STREET)