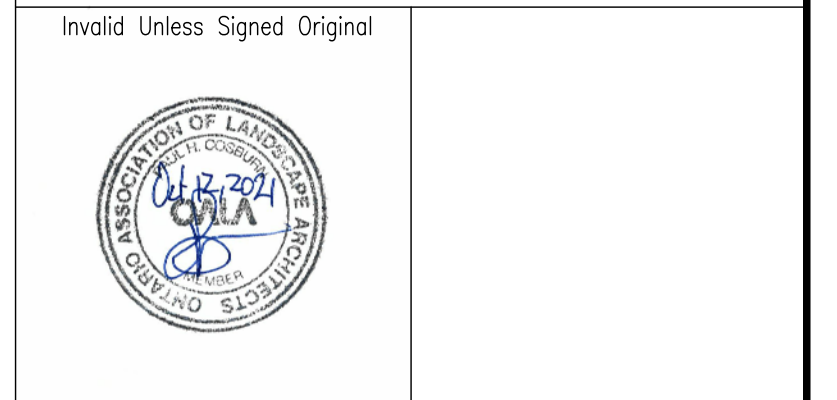


9	Issued for Submission	SW	21 10 12
8	Issued for Submission	CMO	21 03 26
7	Issued for Submission	SW	21 03 17
6	Issued for Submission	CMO	21 02 25
5	For LSRCA Submission	CMO	21 02 17
No	Revision	By	Yr Mo Da

All drawings and designs are the property of Cosburn Nauboris Limited and may not be used or reproduced without permission. This drawing must not be scaled.



cosburn nauboris LTD
 landscape architects
 20 crown steel dr. suite 2
 markham, on L3R 9V9
 1 905 940 4443
 cosburnnauboris.ca

24 REACH STREET
 VENETIAN GROUP
 TOWNSHIP OF UXBRIDGE

DETAILS

Drawn by	CMO	Scale	AS SHOWN
Checked by	PHC	Plot Date	2021-10-12
Approved by	PHC	Project	2198

LD1
 Drawing No.

ELEVATION (STREET SIDE)

SECTION B

WOOD PRIVACY FENCE

cosburn nauboris LTD
landscape architects
DATE: 18.03.19 SCALE: 1:25
PROJECT: 2198venetion

DETAIL 2 - FOR GRADES EXCEEDING 4%

RESIDENTIAL SIDE (STANDARD PANEL)

cosburn nauboris LTD
landscape architects
DATE: 19.03.25 SCALE: 1:25
PROJECT: 2198venetion

SECTION A (FENCE)

WOOD PRIVACY FENCE

cosburn nauboris LTD
landscape architects
DATE: 19.03.25 SCALE: 1:10
PROJECT: 2198venetion

BLACK VINYL - CHAIN LINK FENCE

cosburn nauboris LTD
landscape architects
DATE: 06.10.31 SCALE: 1:25
PROJECT: 2198venetion

ELEVATION

SECTION A

DECORATIVE METAL FENCE

cosburn nauboris LTD
landscape architects
DATE: 20.08.06 SCALE: 1:25
PROJECT: 2198

ELEVATION

SIDE ELEVATION

SECTION A

SIGNAGE MASONRY WALL

cosburn nauboris LTD
landscape architects
DATE: 21.02.04 SCALE: 1:25
PROJECT: 2198

SECTION B

SIGNAGE MASONRY WALL

cosburn nauboris LTD
landscape architects
DATE: 21.02.04 SCALE: 1:25
PROJECT: 2198

MASONRY NOTES

- CONCRETE FOUNDATIONS TO HAVE A MINIMUM COMPRESSIONAL STRENGTH OF 25 MPa @ 28 DAYS w/ 3-5% AIR ENTRAINMENT.
- CONCRETE TO BE READY-MIX MATERIAL SUPPLIED AND PLACED IN ACCORDANCE WITH CAN/CSA-A23, 1-04.
- CONCRETE BLOCK CORE TO BE UNIT MASONRY AS PER CAN S304.1-04.
- REINFORCING STEEL TO BE DEFORMED BARS WITH YIELD STRENGTH OF 400 MPa IN ACCORDANCE WITH CSA G30.18-09/2.
- SPLICES IN REINFORCING TO HAVE MINIMUM OVERLAP OF 500 FOR 10M BARS, 750 FOR 15M BARS.
- ULTIMATE COMPRESSIVE STRENGTH OF MASONRY MATERIALS SHALL BE IN EXCESS OF: HOLLOW CONCRETE BLOCK - 15 MPa SOLID CONCRETE BLOCK - 12.4 MPa MORTAR - 12.4 MPa
- MORTAR TO BE AS SPECIFIED IN CAN/CSA-A173-04. ENSURE THAT WATER AND AGGREGATE USED IN MORTAR WILL NOT CAUSE EFFLORESCENCE.
- MORTAR COLOUR TO BE SELECTED BY LANDSCAPE ARCHITECT.
- CAVITY WALLS SHALL BE CONSTRUCTED SO THAT MORTAR DROPPINGS ARE PREVENTED FROM FORMING A GRUDGE TO ALLOW THE PASSAGE OF RAIN WATER ACROSS THE CAVITY.
- METAL BRICK TIES TO BE AS SPECIFIED IN CAN/CSA-S304.1-04.
- JOINTS BETWEEN PRECAST COPINGS AND SILLS REQUIRE THE APPLICATION OF HIGH QUALITY JOINT SEALER AND BACKER ROD.
- STONE SAMPLES TO BE SUPPLIED TO THE LANDSCAPE ARCHITECT FOR COLOUR SELECTION.
- FOR ALL PILLARS PROVIDE MIN. 25 AIR SPACE BETWEEN STONE FACE AND CONCRETE BLOCK. PROVIDE METAL TIES AT 400 O.C. HORIZONTAL. 400 O.C. VERTICAL. PROVIDE WEEP HOLES WITH PLASTIC COVERED SPACES AT 600 O.C. ALONG BOTTOM BOTTOM COURSE ONLY OR AT EACH JUNCTION OF BASE STONE PRECAST.
- MASON TO PROVIDE SAMPLE SECTION OF PILLAR FACING FOR APPROVAL OF LANDSCAPE ARCHITECT.
- STONE TYPE TO BE COORDINATED WITH BUILDING STONE TO BE APPROVED BY LANDSCAPE ARCHITECT.
- SOIL PARAMETERS:
 - MIN. SOIL BEARING = 150kPa
 - MAX. $f_0 = 0.4$
 - MIN. $k_p = 2.5$

cosburn nauboris LTD
landscape architects

24 REACH STREET
VENETIAN GROUP
TOWNSHIP OF UXBRIDGE

DETAILS

cosburn nauboris LTD
landscape architects

9	Issued for Submission	SW	21 10 12
8	Issued for Submission	CMO	21 03 26
7	Issued for Submission	SW	21 03 17
6	Issued for Submission	CMO	21 02 25
5	For LSRCA Submission	CMO	21 02 17
No Revision		By Yr Mo Da	

All drawings and designs are the property of Cosburn Nauboris Limited and may not be used or reproduced without permission. This drawing must not be scaled.

Invalid Unless Signed Original

cosburn nauboris LTD
landscape architects
20 crown steel dr. suite 2
markham, on L3R 9V9
1 905 940 4443
cosburnnauboris.ca

cosburn nauboris LTD
landscape architects

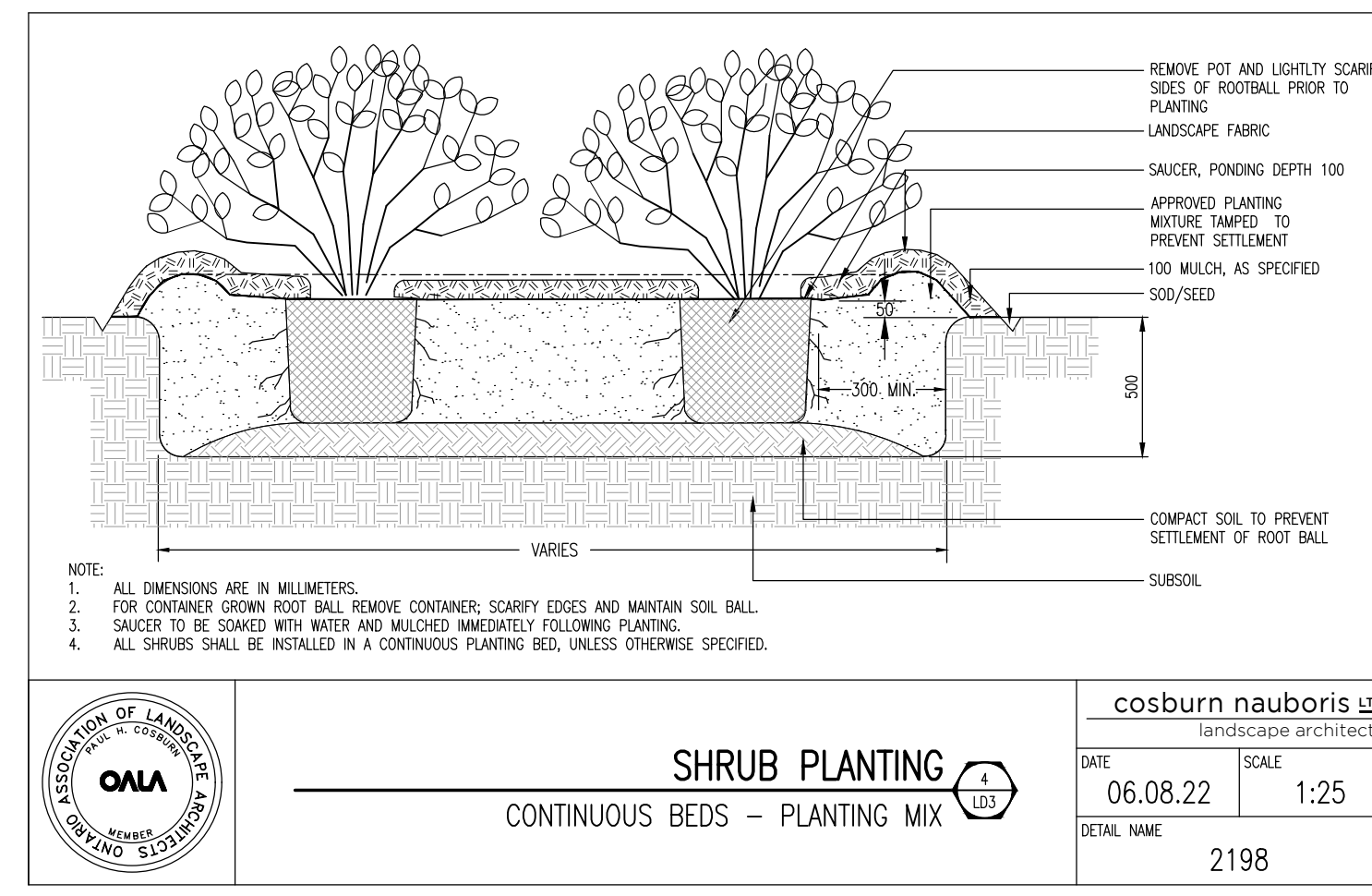
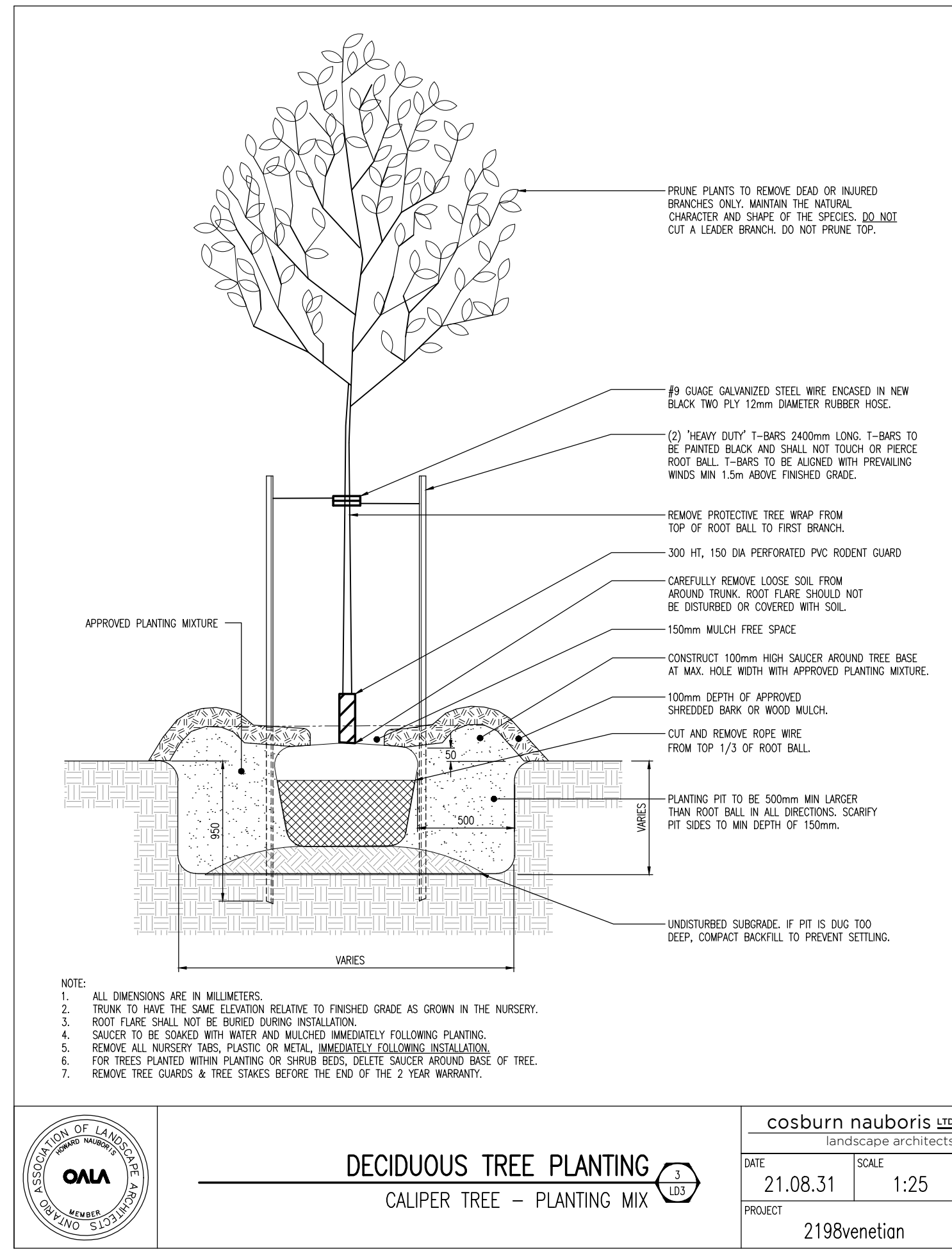
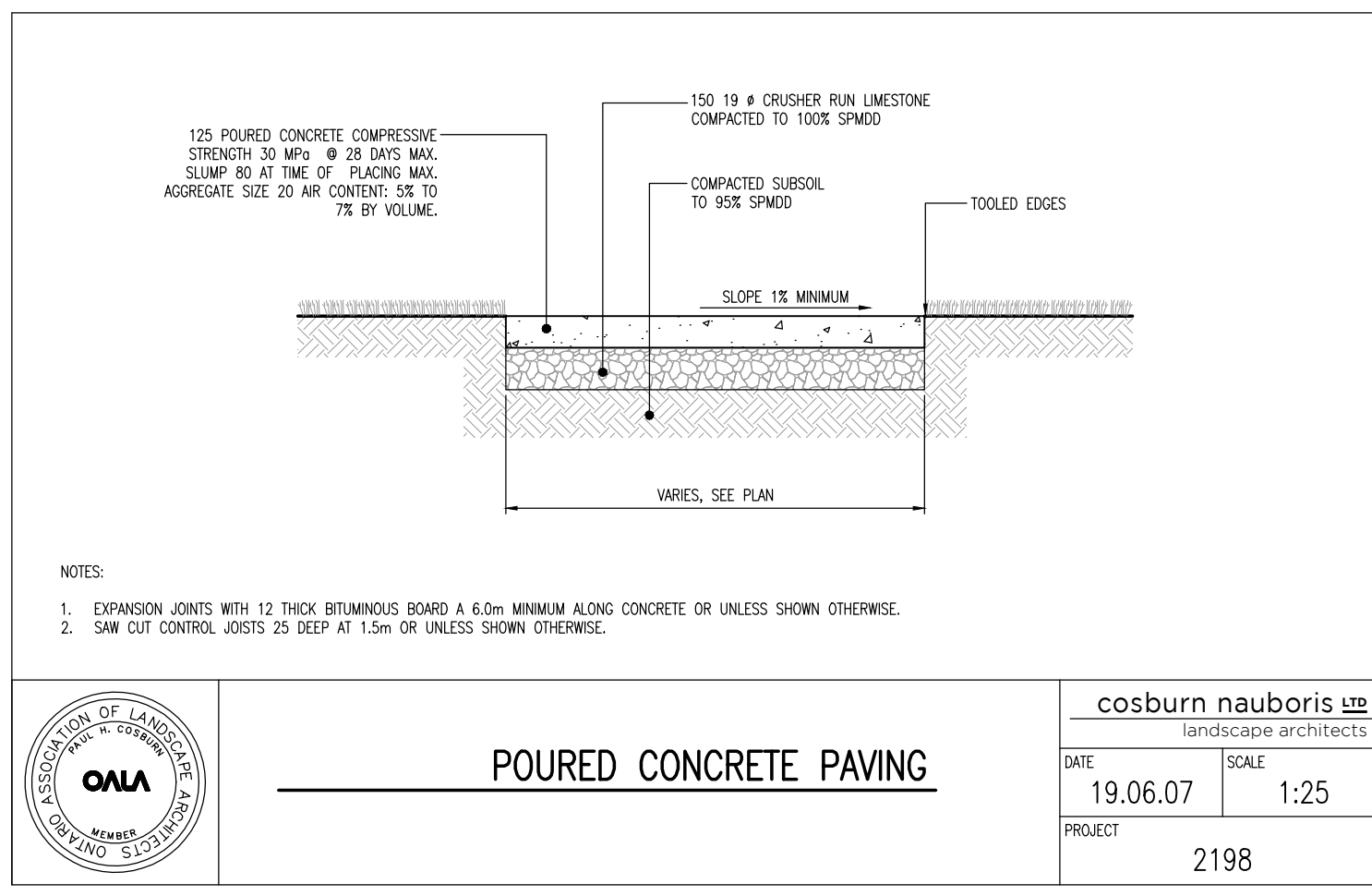
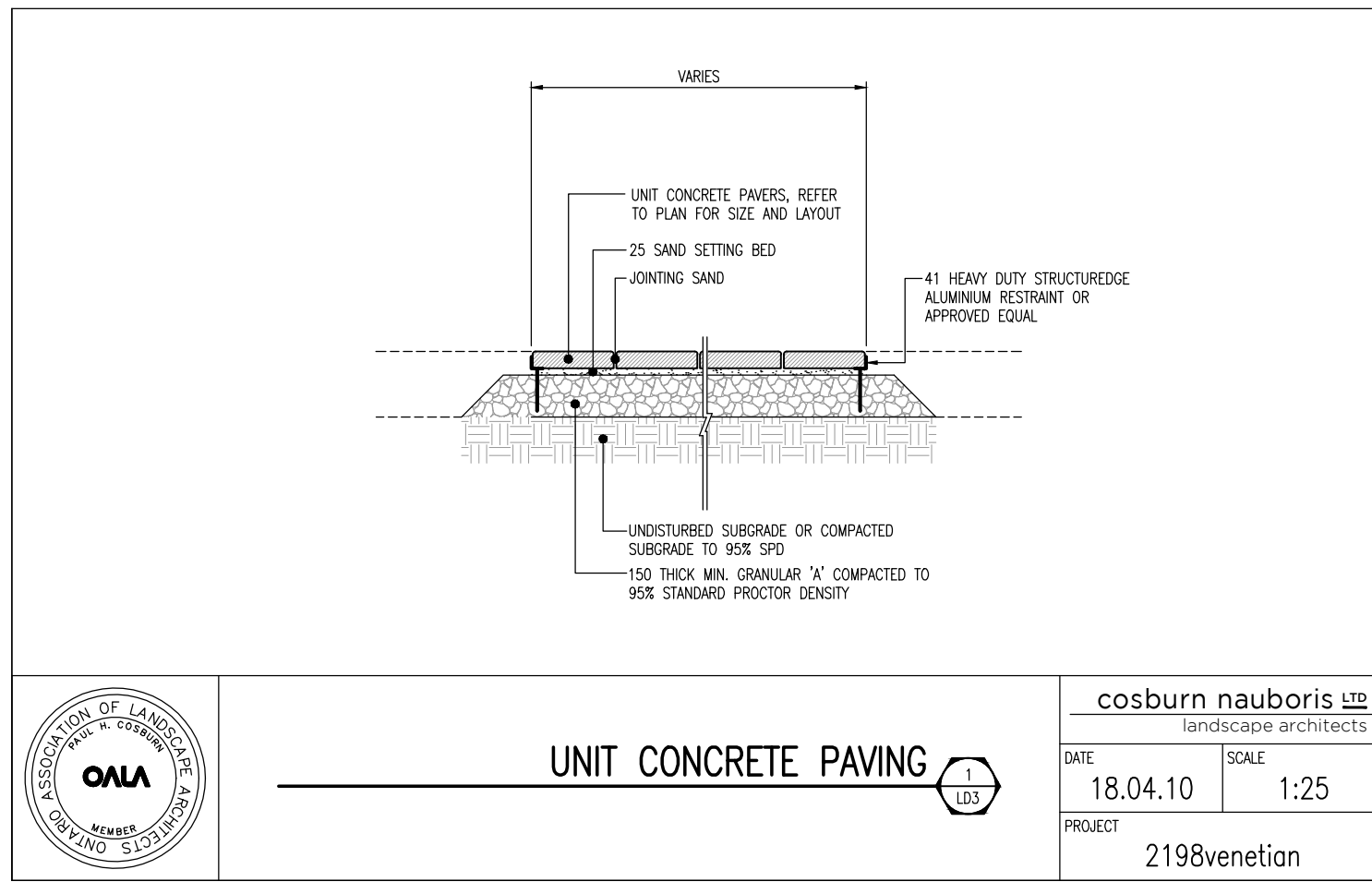
24 REACH STREET
VENETIAN GROUP
TOWNSHIP OF UXBRIDGE

DETAILS

cosburn nauboris LTD
landscape architects

Drawn by	CMO	Scale	AS SHOWN
Checked by	PHC	Plot Date	2021-10-12
Approved by	PHC	Project	2198

LD2
Drawing No.



400 SERIES

MBE-0450-00006

MATERIALS: Bench frame is made from H.S. steel and flat bar. The back and seat is constructed using recycled plastic slats - Cedar color.

FINISH: All steel components are protected with E-Coat rust proofing. The Maglin Powdercoat System provides a durable finish on all metal surfaces.

INSTALLATION: The bench is delivered pre-assembled. Holes (0.5") are provided in each foot for securing to base.

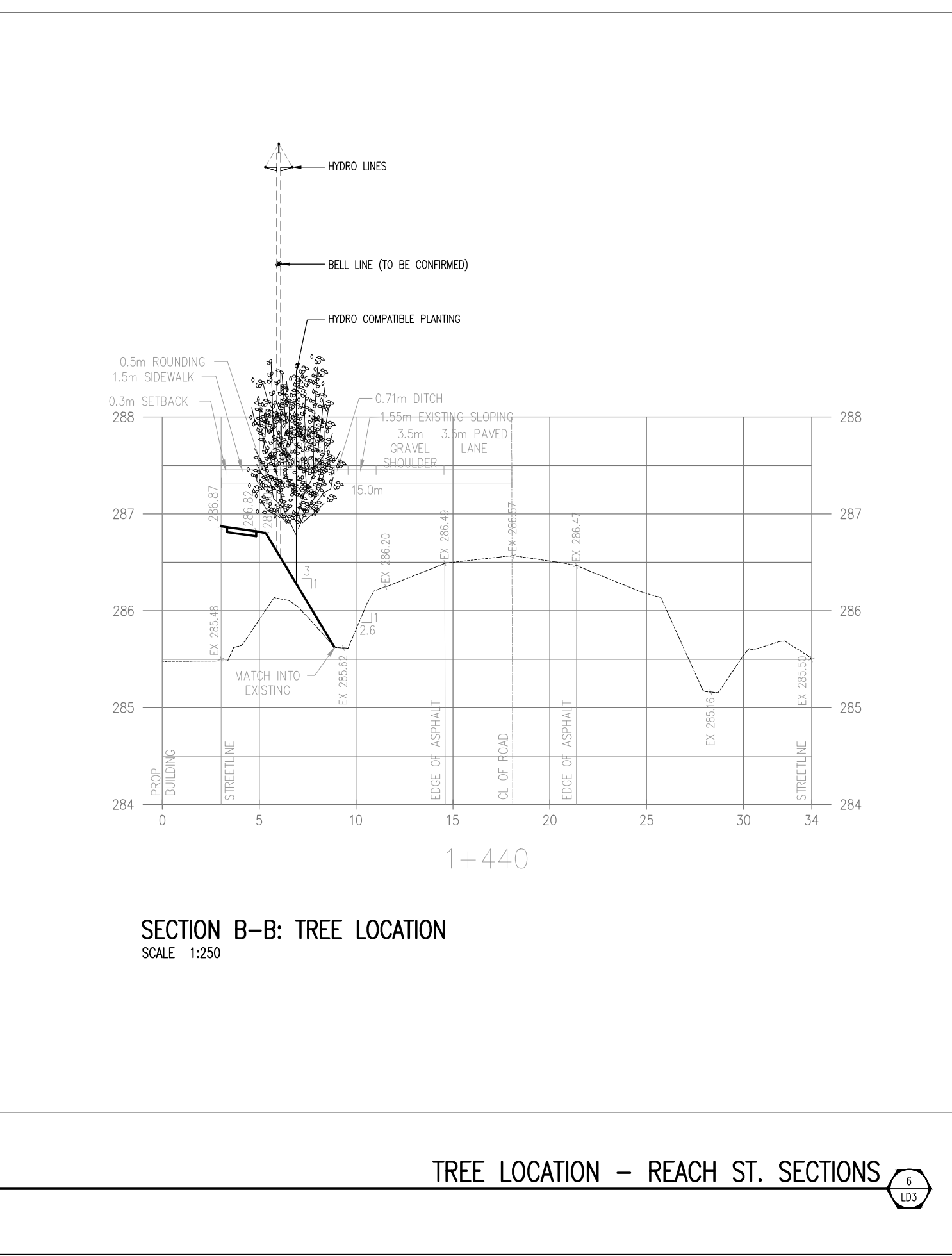
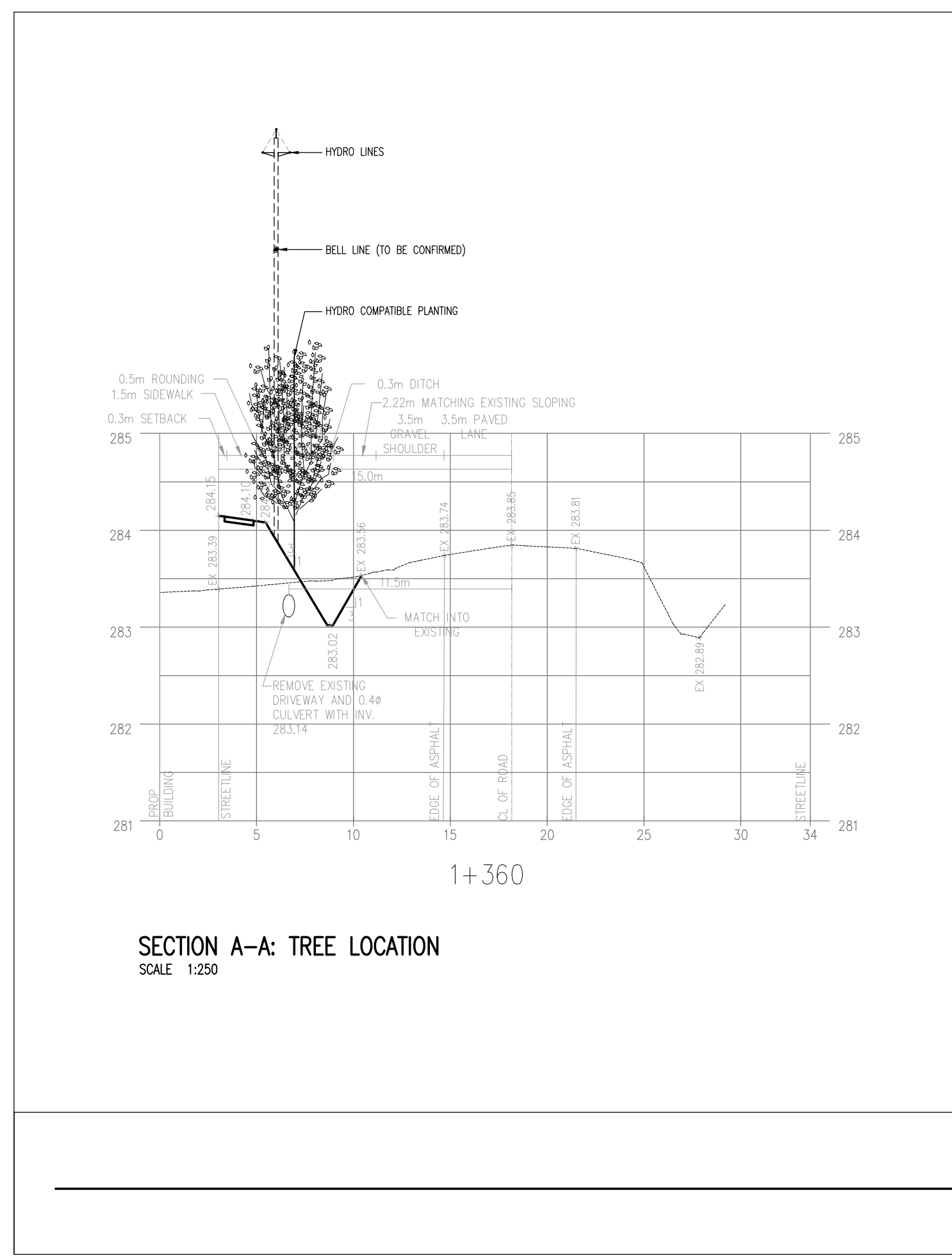
TO SPECIFY: Select MBE-0450-00006
Choose: - Powdercoat Color

HEIGHT: 36.13" (91.7cm) LENGTH: 72" (182.7cm) DEPTH: 25.5" (64.7cm) WEIGHT: 156.66lbs (71.1 kg)

MAGLIN Site Furniture

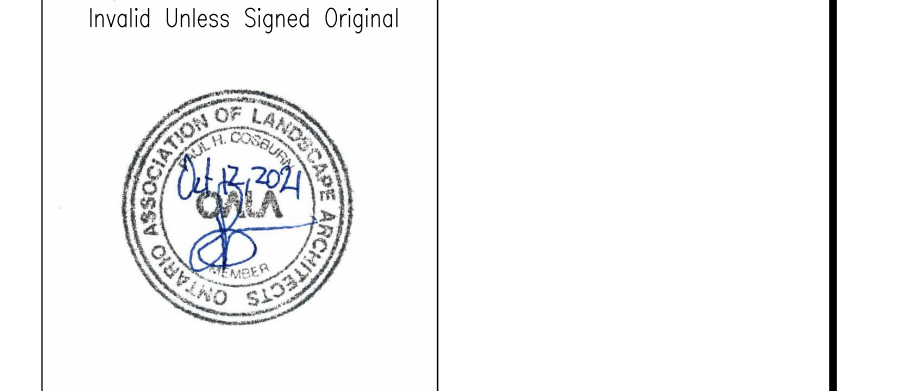
T 800 718 8506
F 877 265 3393
www.maglin.com
sales@maglin.com

- All drawings, specifications, design and details on this page remain the property of Maglin Site Furniture Inc. and may not be used without Maglin authorization.
- Details and specifications may vary due to continuing improvements of our products.



9	Issued for Submission	SW	21 10 12
8	Issued for Submission	CMO	21 03 26
7	Issued for Submission	SW	21 03 17
6	Issued for Submission	CMO	21 02 25
5	For LSRC Submission	CMO	21 02 17
No	Revision	By	Yr Mo Do

All drawings and designs are the property of Cosburn Nauboris Limited and may not be used or reproduced without permission. This drawing must not be scaled.

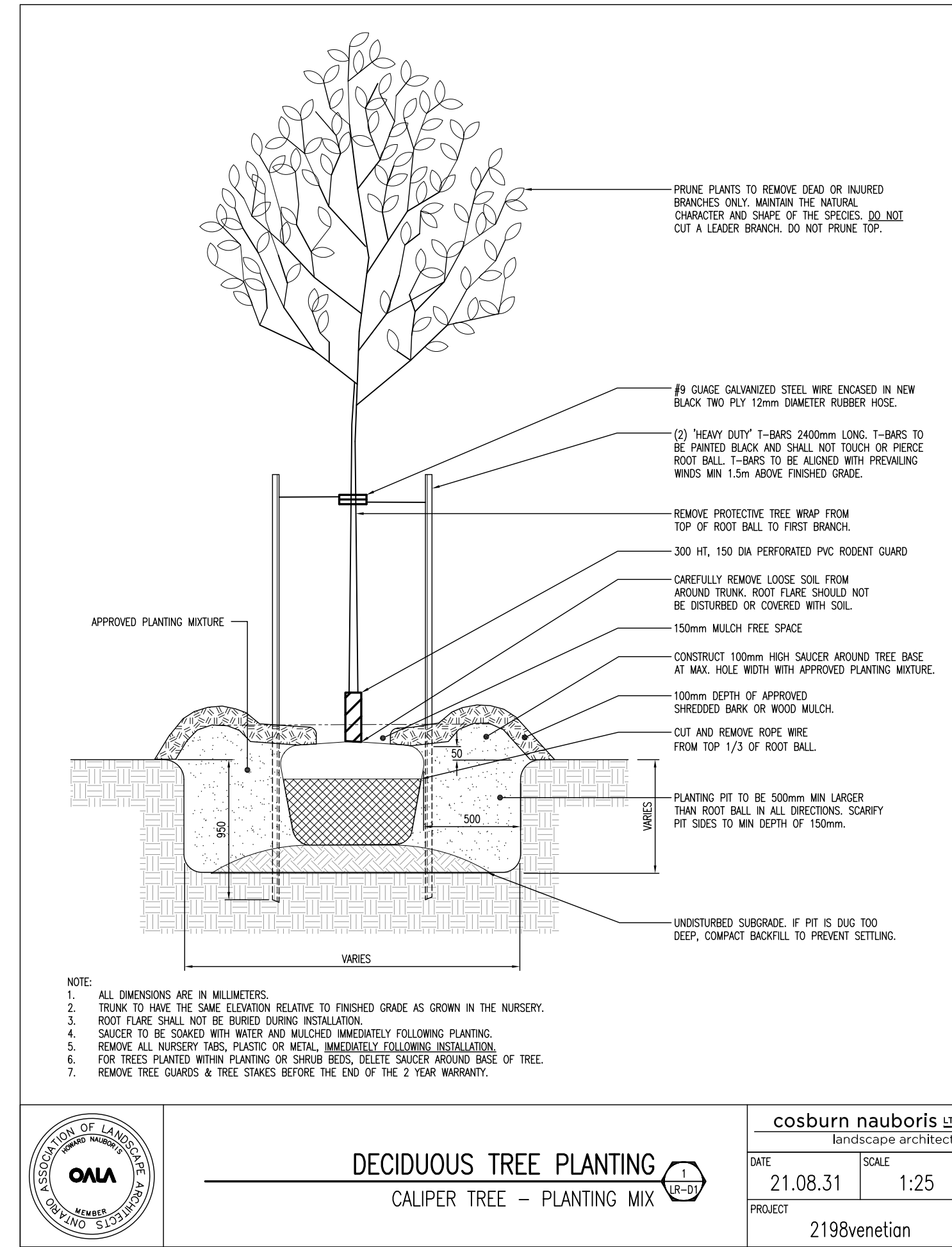


cosburn nauboris LTD
landscape architects
20 crown street dr suite 2 markham, on l3r 9g9
1 905 940 4443
cosburnnauboris.ca

24 REACH STREET
VENETIAN GROUP
TOWNSHIP OF UXBRIDGE

DETAILS

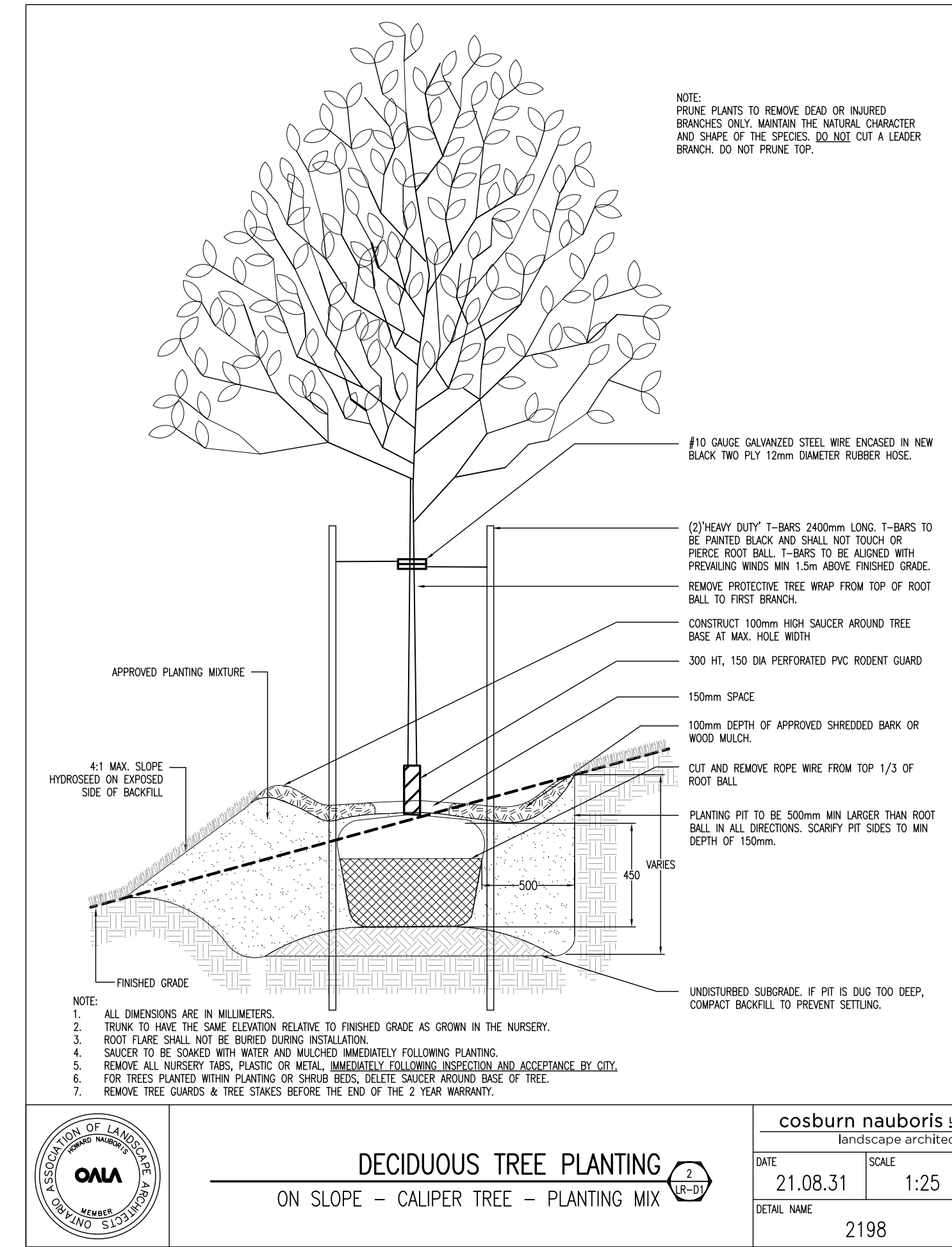
Drawn by	SW	Scale	AS SHOWN	LD3 Drawing No.
Checked by	PHC	Plot Date	2021-10-12	
Approved by	PHC	Project	2198	



DECIDUOUS TREE PLANTING
CALIPER TREE - PLANTING MIX

cosburn nauboris LTD
landscape architects

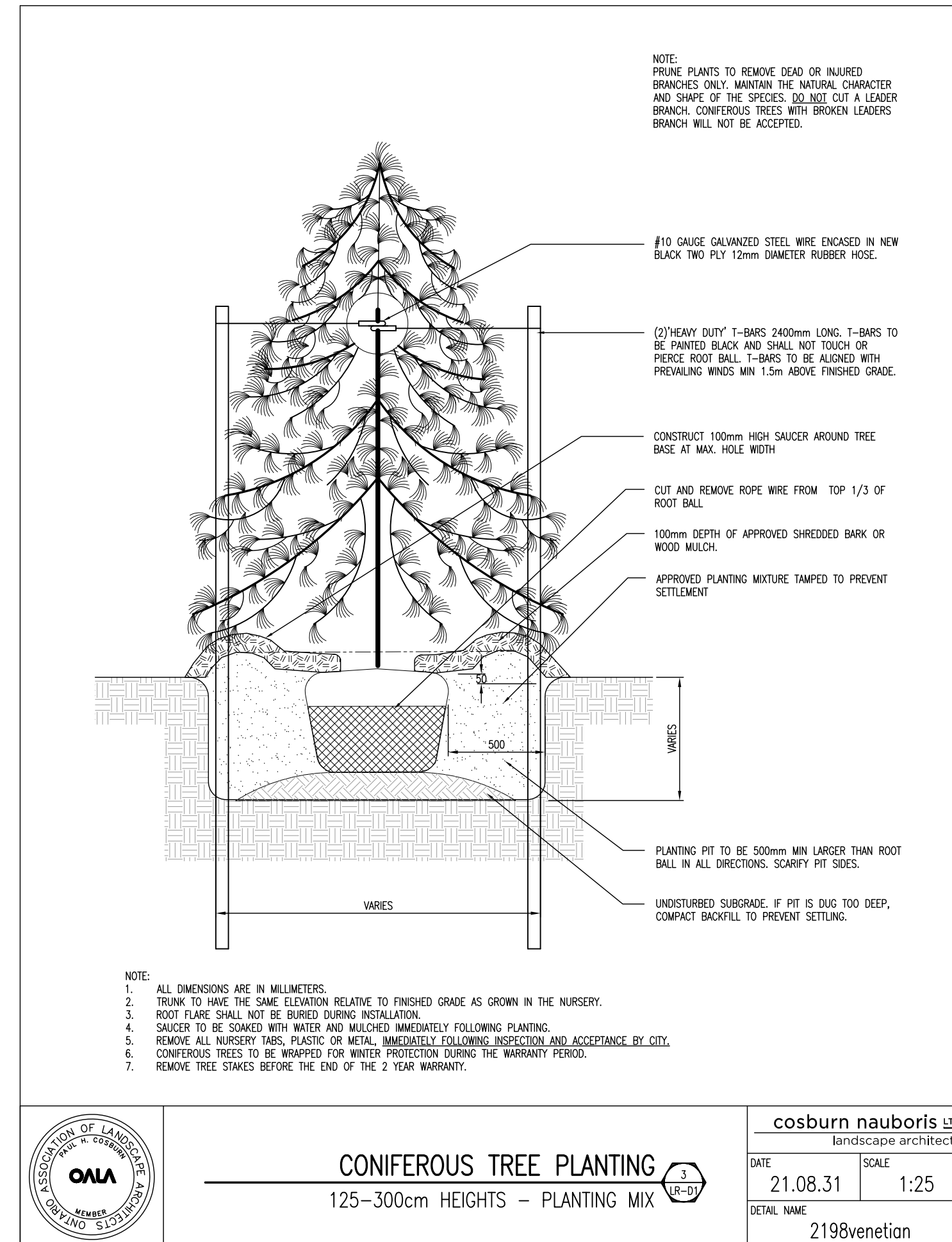
DATE: 21.08.31 SCALE: 1:25
PROJECT: 2198venetian



DECIDUOUS TREE PLANTING
ON SLOPE - CALIPER TREE - PLANTING MIX

cosburn nauboris LTD
landscape architects

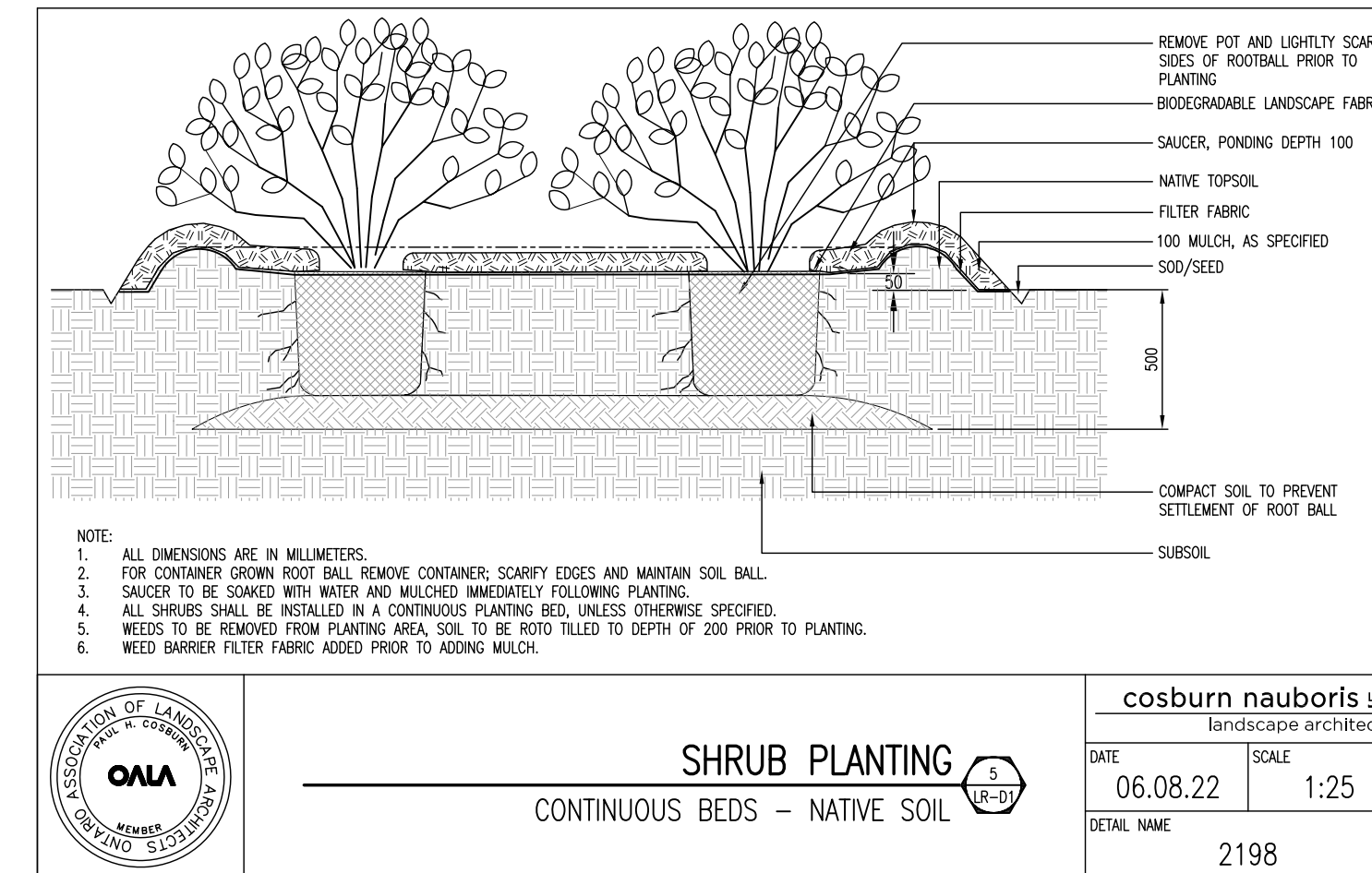
DATE: 21.08.31 SCALE: 1:25
DETAIL NAME: 2198



CONIFEROUS TREE PLANTING
125-300cm HEIGHTS - PLANTING MIX

cosburn nauboris LTD
landscape architects

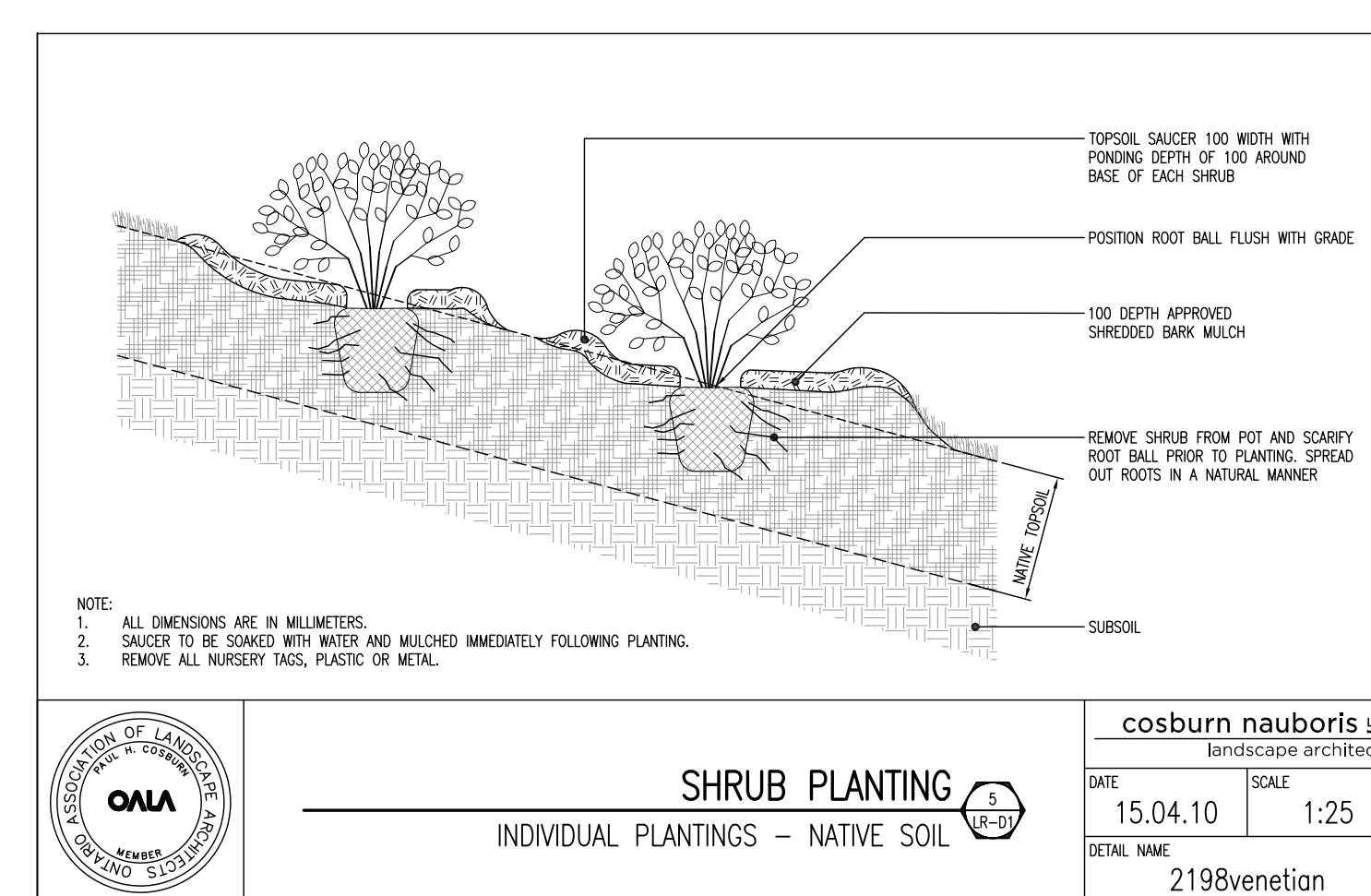
DATE: 21.08.31 SCALE: 1:25
DETAIL NAME: 2198venetian



SHRUB PLANTING
CONTINUOUS BEDS - NATIVE SOIL

cosburn nauboris LTD
landscape architects

DATE: 06.08.22 SCALE: 1:25
DETAIL NAME: 2198



SHRUB PLANTING
INDIVIDUAL PLANTINGS - NATIVE SOIL

cosburn nauboris LTD
landscape architects

DATE: 15.04.10 SCALE: 1:25
DETAIL NAME: 2198venetian

9	Issued for Submission	SW	21 10 12
8	Issued for Submission	CMO	21 03 26
7	Issued for Submission	SW	21 03 17
6	Issued for Submission	CMO	21 02 25
5	For LSRCA Submission	CMO	21 02 17

No Revision By Yr Mo Da
 All drawings and designs are the property of Cosburn Nauboris Limited and may not be used or reproduced without permission. This drawing must not be scaled.

Invalid Unless Signed Original

cosburn nauboris LTD
landscape architects
cosburnnauboris.ca

24 REACH STREET
VENETIAN GROUP
TOWNSHIP OF UXBRIDGE

LANDSCAPE RESTORATION AND
EDGE MANAGEMENT DETAILS

Drawn by	CMO	Scale	AS SHOWN
Checked by	PHC	Plot Date	2021-10-12
Approved by	PHC	Project	2198

LR-D1
Drawing No.