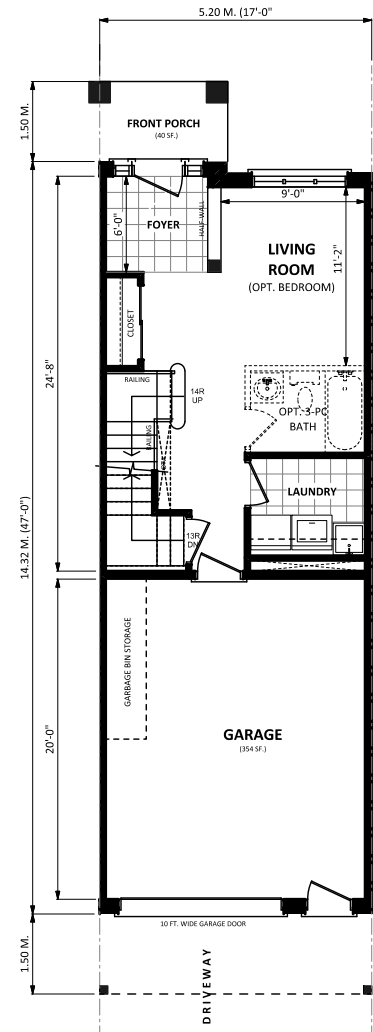
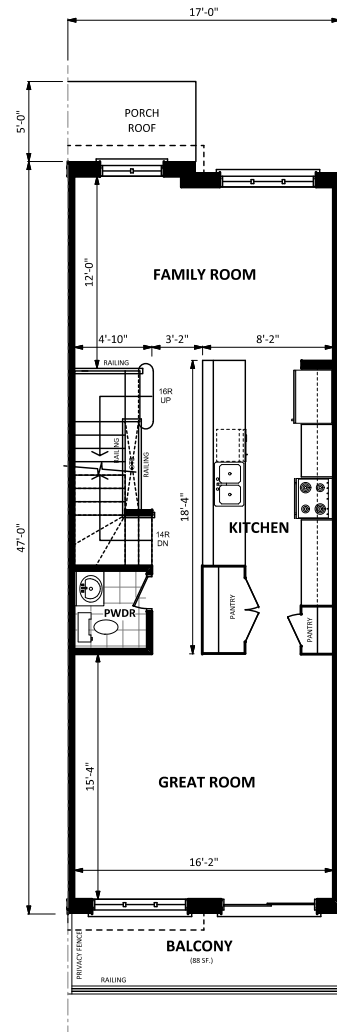


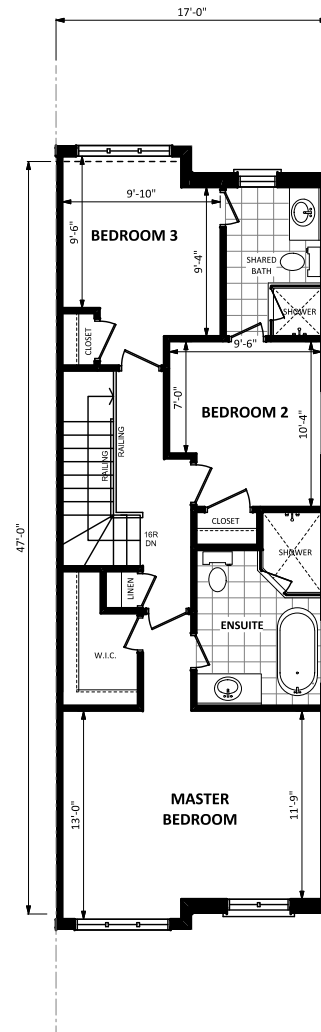
**BASEMENT PLAN**



**GROUND FLOOR PLAN**  
FLR. AREA = 450 S.F. (41.81 SM.)



**MAIN FLOOR PLAN**  
FLR. AREA = 816 S.F. (75.81 SM.)



**THIRD FLOOR PLAN**  
FLR. AREA = 834 S.F. (77.48 SM.)

5.20 M. WIDE UNITS

**MODEL A-END** (for Lots 5, 6 & 10)

FLOOR AREA CALCULATIONS (MODEL A-End)		
GROUND FLOOR	450 SQ.FT.	
SECOND FLOOR	816 SQ.FT.	
THIRD FLOOR	834 SQ.FT.	
G.F.A.	2,100 SQ.FT.	195.10 SQ.M.
BUILDING AREA	866 SQ.FT.	80.45 SQ.M.

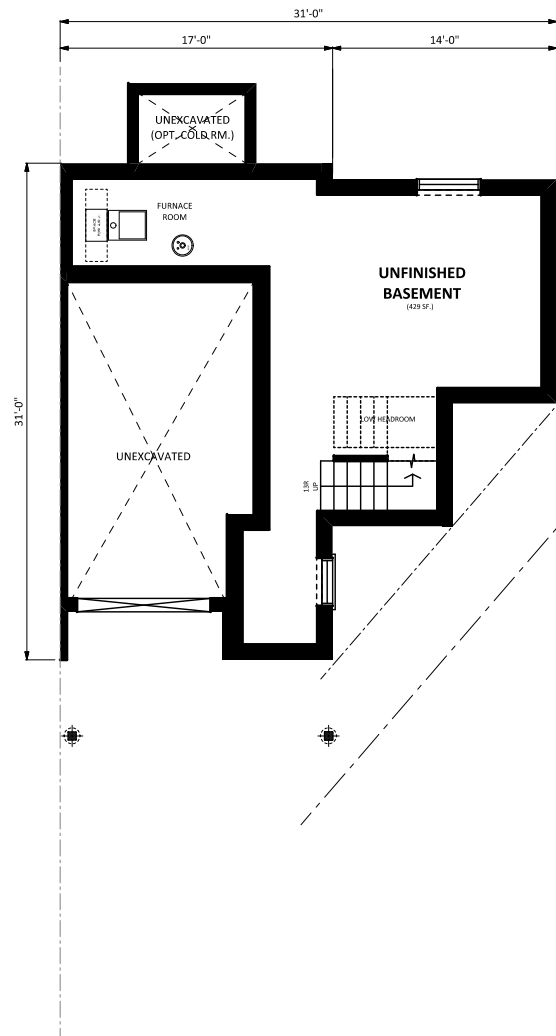
**CONCEPTUAL FLOOR PLANS**

PROPOSED RESIDENTIAL DEVELOPMENT  
197 TORONTO STREET SOUTH, UXBRIDGE  
W-2471 (NOVEMBER 22, 2021)

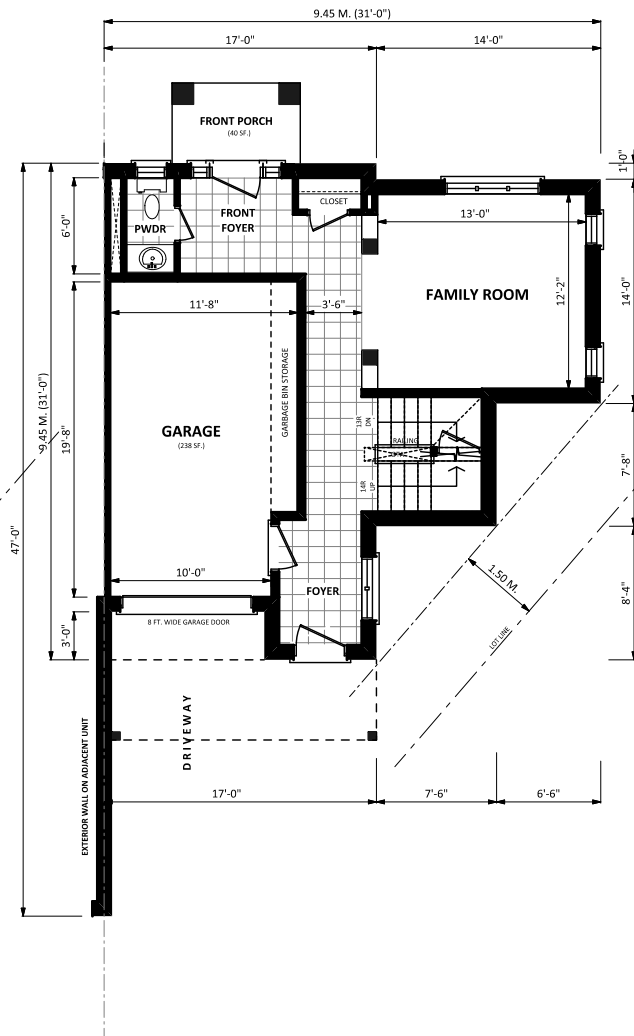


**JOHN G. WILLIAMS LIMITED**  
ARCHITECT

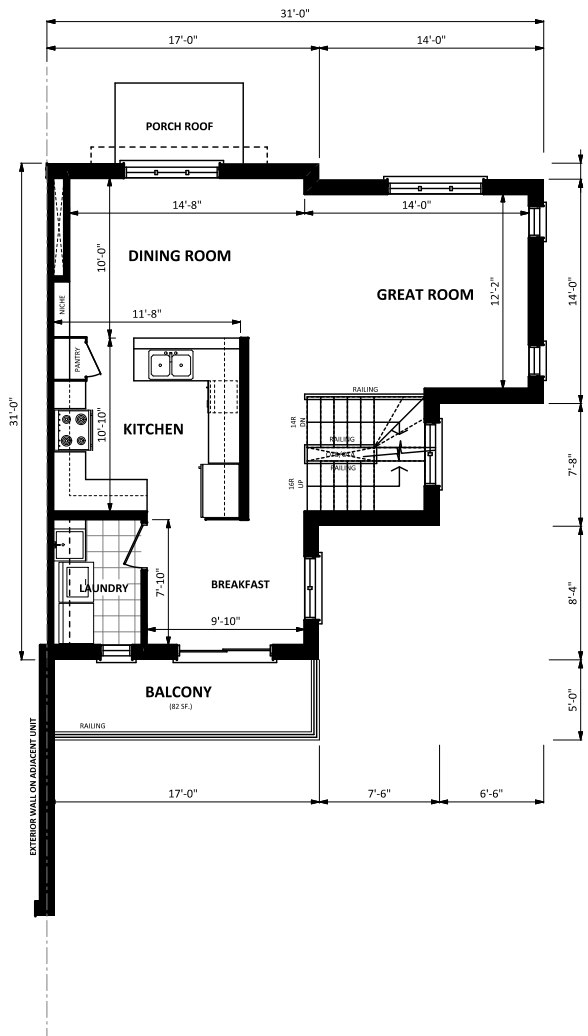
40 Vogell Road, Unit 46, Richmond Hill, Ontario L4B 3N6  
905-780-0500 info@williamsarch.com williamsarch.com



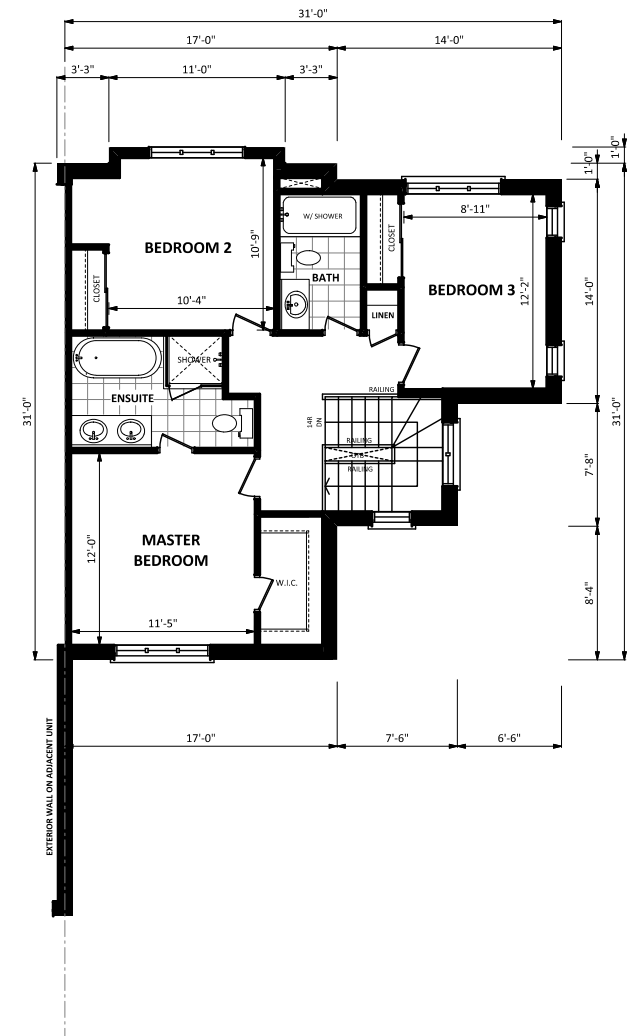
**BASEMENT PLAN**



**GROUND FLOOR PLAN**  
FLR. AREA = 513 S.F. (47.66 SM.)



**MAIN FLOOR PLAN**  
FLR. AREA = 781 S.F. (72.55 SM.)



**THIRD FLOOR PLAN**  
FLR. AREA = 792 S.F. (73.58 SM.)

CUSTOM MODEL - UNIT 1

**MODEL B - COR** (for Lot 1)

FLOOR AREA CALCULATIONS (MODEL B-COR)		
GROUND FLOOR	513	SQ.FT.
SECOND FLOOR	781	SQ.FT.
THIRD FLOOR	799	SQ.FT.
G.F.A.	2,093	SQ.FT. 194.44 SQ.M.
BUILDING AREA	831	SQ.FT. 77.20 SQ.M.

**CONCEPTUAL FLOOR PLANS**  
PROPOSED RESIDENTIAL DEVELOPMENT  
197 TORONTO STREET SOUTH, UXBRIDGE  
W-2471 (NOVEMBER 15, 2021)



**JOHN G. WILLIAMS LIMITED**  
ARCHITECT

40 Vogell Road, Unit 46, Richmond Hill, Ontario L4B 3N6  
905-780-0500 info@williamsarch.com williamsarch.com